

BG12 SERIES

BG12-200 12V Gel Battery



BOSCH
Invented for life

Applications

Telecommunications	Engine starting	Golf trolley
Solar system	Wheelchair	Boats
Wind power system	Floor cleaning machines	

Bosch Master Data

Short Order Part Number	Nominal Voltage	Nominal Capacity (20HR)	
BG12-200	12V	200.0 AH	
Case Size Dimension			
Length	Width	Container Height	Total Height (with Terminal)
522±3mm (20.55 inches)	240±3mm (9.45 inches)	218±3mm (8.58 inches)	224±3mm (8.81 inches)
Approx Weight	Terminal	Container Material	
62.9 kg (138.7lbs)	T11	ABS	
Rated Capacity			
200.0 AH/10.0 A (20hr, 1.80V/cell, 25°C/77°F)	186.0 AH/18.6 A (10hr, 1.75V/cell, 25°C/77°F)	160.0 AH/32.0 A (5hr, 1.75V/cell, 25°C/77°F)	
139.2 AH/46.4 A (3hr, 1.75V/cell, 25°C/77°F)	110.0 AH/110.0 A (1hr, 1.67V/cell, 25°C/77°F)		
Max. Discharge Current	Internal Resistance		
1800A (5s)	Approx 3.24m Ω		
Operating Temp. Range			
Discharge : -20-55°C (-4-131°F)	Charge: 0-40°C (32-104°F)	Storage : -20-50°C (-4-122°F)	
Nominal Operating Temp. Range	Cycle Use		
25±3°C (77±5°F)	Initial Charging Current less than 50.0A.Voltage 14.4V-15.0V at 25°C (77°F) Temp. Coefficient -30mV/°C		
Standby Use			
No limit on Initial Charging Current Voltage 13.5V-13.8V at 25°C (77°F) Temp. Coefficient -20mV/°C			
Capacity affected by Temperature		Self Discharge	
40°C (104°F) 103%	25°C (77°F) 100%	0°C (32°F) 86%	Bosch BG series batteries may be stored for up to 9 months at 25°C (77°F) and then a freshening charge is required. For higher temperatures the time interval will be shorter.

Certification Standards

AS/NZS
4029.2:2000



Constant Current Discharge (Amperes) at 25°C (77°F)

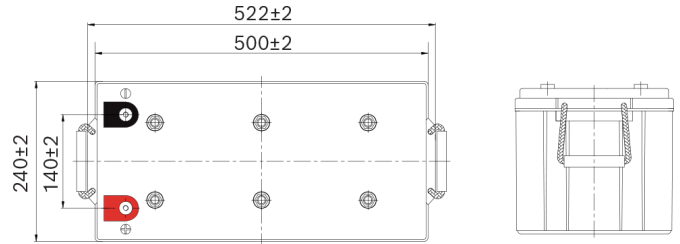
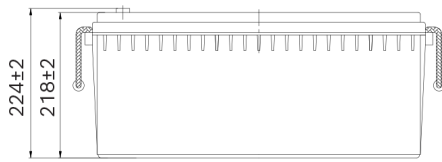
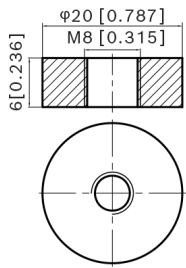
F.V/Time	20min	30min	45min	1hr	2hr	3hr	4hr	5hr	6hr	7hr	8hr	9hr	10hr	20hr
1.85V/cell	169.2	132.8	101.3	84.8	53.8	41.0	34.0	29.3	25.3	22.4	20.2	18.5	17.5	9.60
1.80V/cell	193.8	148.4	111.7	93.6	58.2	43.9	36.0	30.8	26.6	23.5	21.2	19.4	18.2	10.0
1.75V/cell	217.8	163.2	120.8	100.2	61.7	46.4	37.7	32.0	27.5	24.3	21.9	20.0	18.6	10.2
1.70V/cell	234.6	174.8	128.3	106.0	65.4	48.3	39.0	33.0	28.5	25.1	22.5	20.5	19.0	10.3
1.65V/cell	244.2	181.6	132.8	110.0	67.1	49.9	39.9	33.7	28.9	25.5	22.9	20.8	19.3	10.4
1.60V/cell	264.6	194.4	142.7	116.8	69.8	51.9	41.4	34.7	29.6	26.0	23.3	21.2	19.6	10.6

Constant Power Discharge (Watts) at 25°C (77°F)

F.V/Time	20min	30min	45min	1hr	2hr	3hr	4hr	5hr	6hr	7hr	8hr	9hr	10hr	20hr
1.85V/cell	323.8	255.9	196.5	165.1	105.1	80.3	66.8	57.9	50.1	44.5	40.2	36.8	34.8	19.2
1.80V/cell	366.1	283.3	215.1	181.3	113.3	85.8	70.5	60.6	52.4	46.4	42.0	38.6	36.3	19.9
1.75V/cell	406.9	308.7	230.8	193.1	119.6	90.4	73.6	62.7	54.1	47.9	43.3	39.7	37.0	20.3
1.70V/cell	433.5	327.8	243.3	203.1	126.2	93.9	75.9	64.5	55.9	49.4	44.5	40.7	37.8	20.5
1.65V/cell	446.2	337.0	250.2	209.6	128.8	96.4	77.5	65.7	56.7	50.0	45.1	41.1	38.2	20.7
1.60V/cell	478.1	357.3	266.8	221.3	133.4	99.8	80.2	67.5	57.8	51.0	45.8	42.0	38.9	21.0

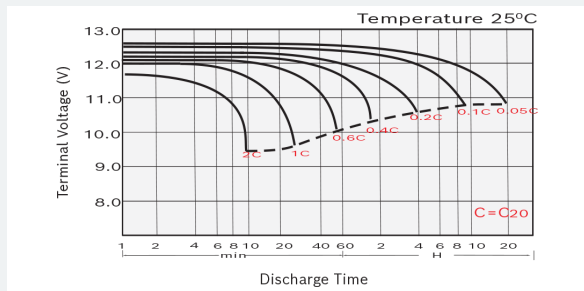
Product Dimension & Design

T11 Terminal
Unit: mm [inches]

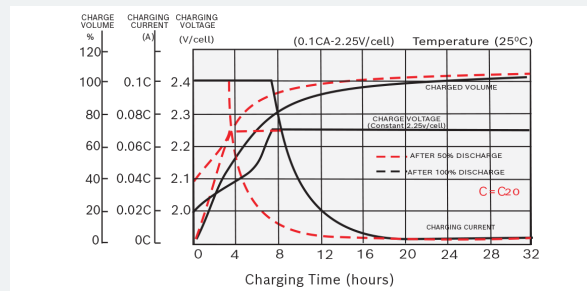


Product Performance Overview

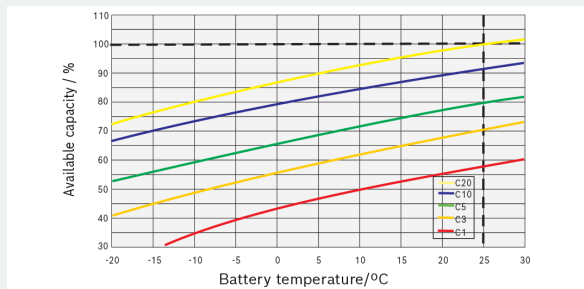
Discharge Characteristics



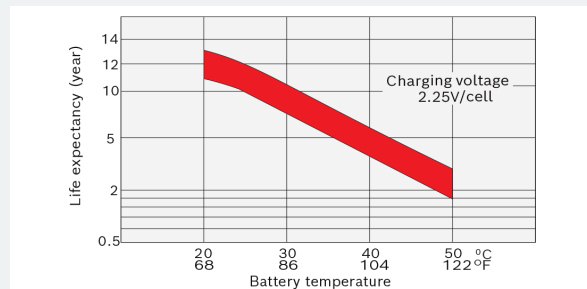
Float Charging Characteristics



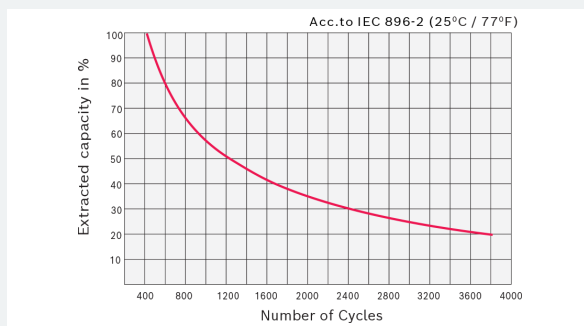
Temperature Effects in Relation to Battery Capacity



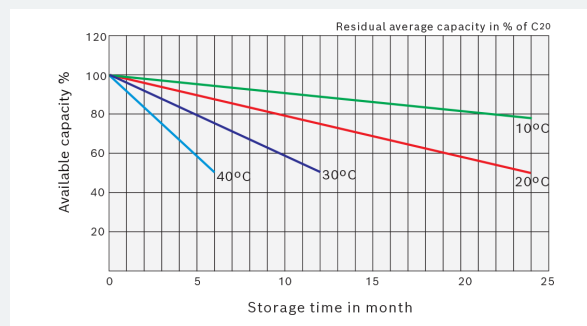
Effect of Temperature on Long Term Float Life



Cycle Life in Relation to Depth of Discharge



General Relation of Capacity VS. Storage Time



Your address for genuine Bosch quality:

Dealer stamp here: