

# BG12 SERIES

## BG12-38 12V Gel Battery



**BOSCH**  
Invented for life

### Applications

Telecommunications	Engine starting	Golf trolley
Solar system	Wheelchair	Boats
Wind power system	Floor cleaning machines	

### Bosch Master Data

Short Order Part Number	Bosch 13 Digit Part Number	Nominal Voltage	Nominal Capacity (20HR)
BG12-38	0092L67000HD6	12V	38.0 AH
<b>Case Size Dimension</b>			
Length	Width	Container Height	Total Height (with Terminal)
197±2mm (7.76 inches)	165±2mm (6.50 inches)	170±2mm (6.69 inches)	170±2mm (6.69 inches)
Approx Weight	Terminal	Container Material	
13.5 kg (29.77lbs)	T6	ABS	
<b>Rated Capacity</b>			
38.0 AH/1.90 A (20hr, 1.80V/cell, 25°C/77°F)	35.3 AH/3.53 A (10hr, 1.75V/cell, 25°C/77°F)	30.4 AH/6.08 A (5hr, 1.75V/cell, 25°C/77°F)	
26.5 AH/8.82 A (3hr, 1.75V/cell, 25°C/77°F)	20.9 AH/20.9 A (1hr, 1.67V/cell, 25°C/77°F)		
Max. Discharge Current	Internal Resistance		
380A (5s)	Approx 12.0mΩ		
<b>Operating Temp. Range</b>			
Discharge : -20~55°C (-4~131°F)	Charge: 0~40°C (32~104°F)	Storage : -20~50°C (-4~122°F)	
Nominal Operating Temp. Range	Cycle Use		
25±3°C (77±5°F)	Initial Charging Current less than 7.6A.Voltage 14.4V~15.0V at 25°C (77°F) Temp. Coefficient -30mV/°C		
Standby Use			
No limit on Initial Charging Current Voltage 13.5V~13.8V at 25°C (77°F) Temp. Coefficient -20mV/°C			
Capacity affected by Temperature	Self Discharge		
40°C (104°F) 103%	25°C (77°F) 100%	0°C (32°F) 86%	Bosch BG series batteries may be stored for up to 9 months at 25°C (77°F) and then a freshening charge is required. For higher temperatures the time interval will be shorter.

### Certification Standards

AS/NZS  
4029.2:2000



### Constant Current Discharge (Amperes) at 25°C (77°F)

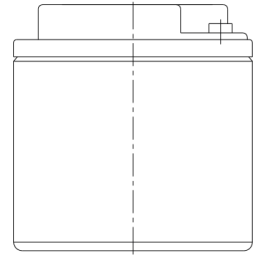
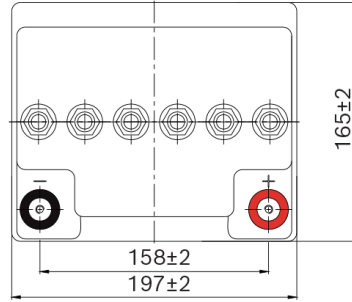
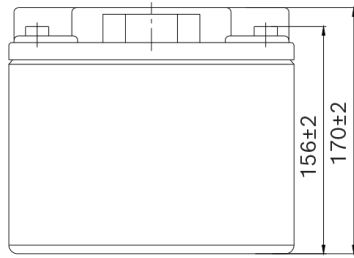
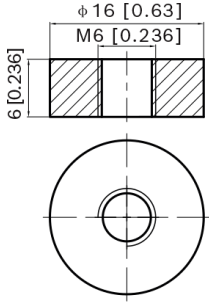
F.V/Time	20min	30min	45min	1hr	2hr	3hr	4hr	5hr	6hr	7hr	8hr	9hr	10hr	20hr
1.85V/cell	32.1	25.2	19.3	16.1	10.2	7.79	6.45	5.57	4.81	4.26	3.84	3.51	3.32	1.82
1.80V/cell	36.8	28.2	21.2	17.8	11.1	8.35	6.84	5.85	5.05	4.46	4.02	3.69	3.47	1.90
1.75V/cell	41.4	31.0	23.0	19.0	11.7	8.82	7.16	6.08	5.23	4.61	4.15	3.80	3.53	1.94
1.70V/cell	44.6	33.2	24.4	20.1	12.4	9.18	7.40	6.27	5.41	4.77	4.28	3.90	3.62	1.96
1.65V/cell	46.4	34.5	25.2	20.9	12.7	9.47	7.58	6.40	5.50	4.84	4.34	3.95	3.66	1.98
1.60V/cell	50.3	36.9	27.1	22.2	13.3	9.85	7.87	6.60	5.63	4.94	4.42	4.04	3.73	2.01

### Constant Power Discharge (Watts) at 25°C (77°F)

F.V/Time	20min	30min	45min	1hr	2hr	3hr	4hr	5hr	6hr	7hr	8hr	9hr	10hr	20hr
1.85V/cell	61.5	48.6	37.3	31.4	20.0	15.3	12.7	11.0	9.52	8.45	7.64	6.99	6.61	3.64
1.80V/cell	69.6	53.8	40.9	34.4	21.5	16.3	13.4	11.5	10.0	8.82	7.98	7.33	6.90	3.79
1.75V/cell	77.3	58.7	43.9	36.7	22.7	17.2	14.0	11.9	10.3	9.11	8.22	7.54	7.03	3.86
1.70V/cell	82.4	62.3	46.2	38.6	24.0	17.8	14.4	12.3	10.6	9.39	8.45	7.74	7.18	3.90
1.65V/cell	84.8	64.0	47.5	39.8	24.5	18.3	14.7	12.5	10.8	9.50	8.56	7.82	7.26	3.94
1.60V/cell	90.8	67.9	50.7	42.1	25.3	19.0	15.2	12.8	11.0	9.68	8.69	7.97	7.39	3.99

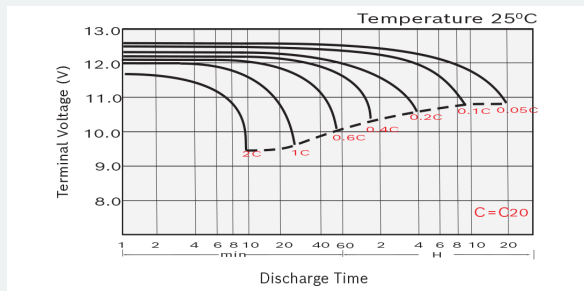
## Product Dimension & Design

T6 Terminal  
Unit: mm [inches]

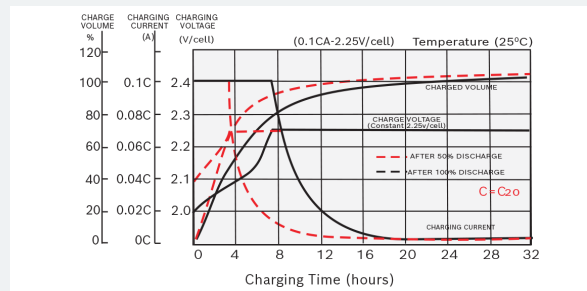


## Product Performance Overview

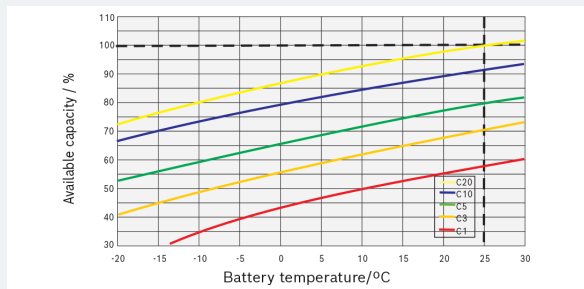
### Discharge Characteristics



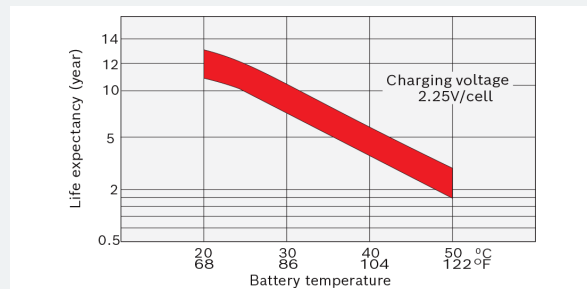
### Float Charging Characteristics



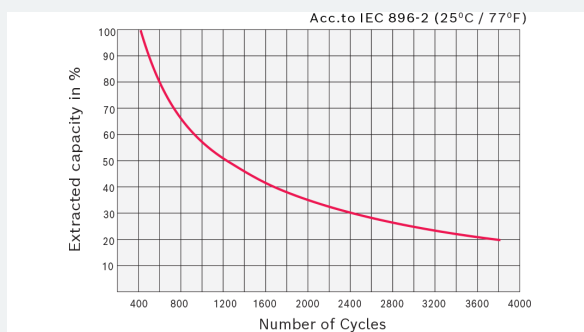
### Temperature Effects in Relation to Battery Capacity



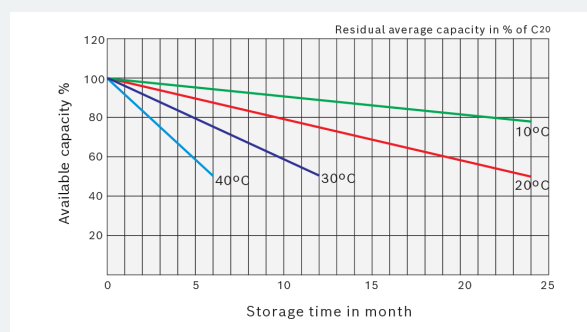
### Effect of Temperature on Long Term Float Life



### Cycle Life in Relation to Depth of Discharge



### General Relation of Capacity VS. Storage Time



Your address for genuine Bosch quality:

Dealer stamp here: