



Bosch

Installation Guidelines for Cabin Filters

Part Number: AP-N06
0986 AF7 007

This manual describes how to replace the cabin filter. Before installing, please be sure to read this book to ensure safe and correct installation.

Estimated Installation Time: 5-20 minutes

In some cases, tools are required and replacement work adds additional time.

Recommended replacement time

1 year or 10,000km

However, it is recommended to check and replace your cabin filter as soon as possible when driving in heavily soiled areas.

The contents of this installation guide are accurate as of May 2022

Precautions for installation and use

- Be sure to park your vehicle in a safe place with the engine and air conditioner turned off before commencing the replacement process.
- When replacing your cabin filter, please refer to the instruction manual of the vehicle, maintenance manual, etc.
- This guide is just an example and may differ from the actual vehicle.
- Please refrain from unreasonable work. It may result in damaging the vehicle or personal injury.
- If you are not confident in the work please consult your local workshop.
- Check the direction of the arrow so that you do not mistake the front and back of the filter when installing.
- This product displays AIR FLOW (wind direction) with an arrow, but other companies may display "TOP UP" on their filters.

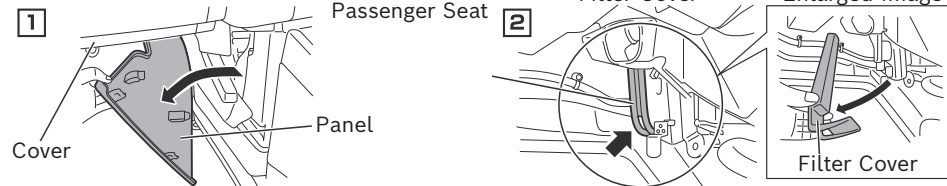
Robert Bosch (Australia) Pty. Ltd.
1555 Centre Road
Clayton VIC 3168

For Further information please contact Bosch on:
Email: CustomerService.AA@au.bosch.com
Australia: **1300 307 040** www.boschaftermarket.com.au
New Zealand **0800 452 896** www.boschaftermarket.co.nz

N06 Cabin Filter Installation Guide

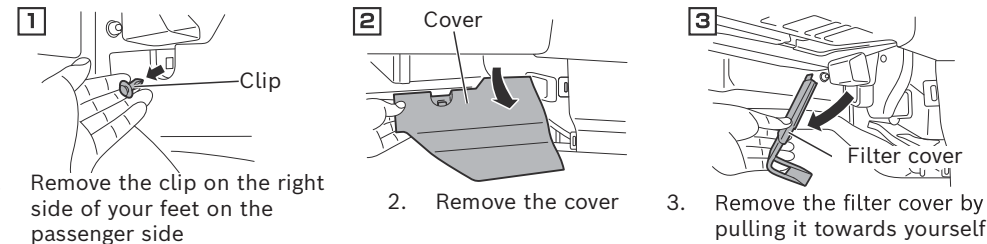
1. Removing the glove box and filter cover

For X-Trail



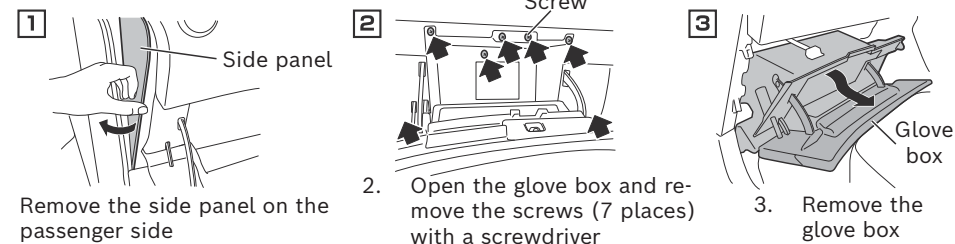
1. Please remove the panel next to the centre console on the passenger side
2. Remove the filter cover by pulling it towards yourself

For Serena

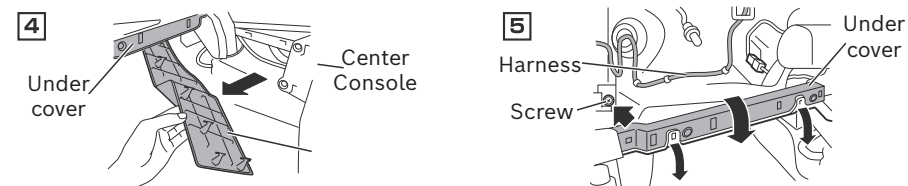


1. Remove the clip on the right side of your feet on the passenger side
2. Remove the cover
3. Remove the filter cover by pulling it towards yourself

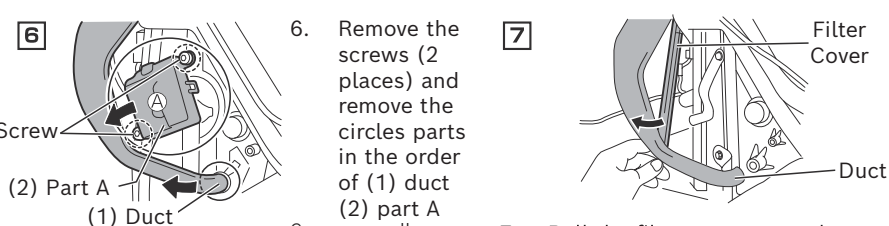
For Dualis



1. Remove the side panel on the passenger side
2. Open the glove box and remove the screws (7 places) with a screwdriver
3. Remove the glove box



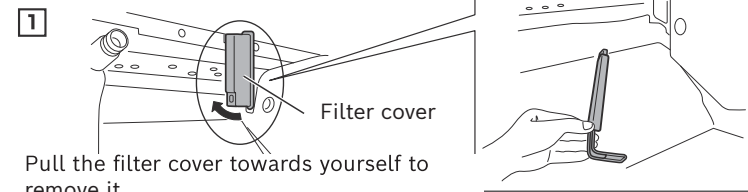
4. Remove the panel next to the center console on the passenger side
5. Remove the screw (1 place) under the glove box and remove the under cover. (Be careful not to remove the harness)



6. Remove the screws (2 places) and remove the circles parts in the order of (1) duct (2) part A
7. Pull the filter cover towards yourself to remove it

Grease may adhere to the product so be careful not to get it on your clothes

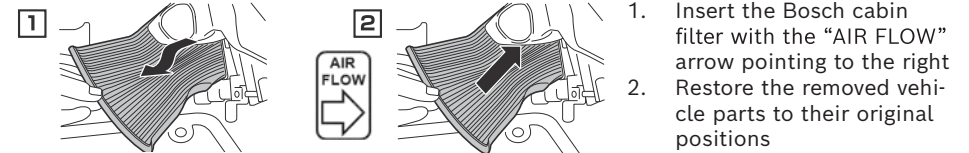
For Lafesta



1. Pull the filter cover towards yourself to remove it

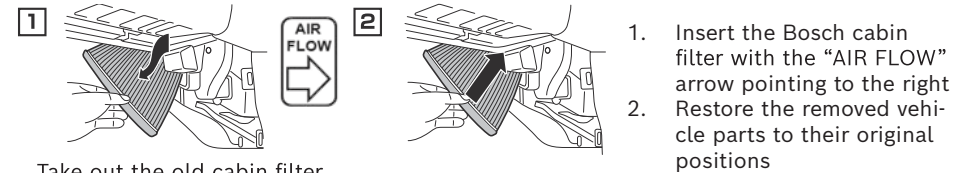
2. Removing the old cabin filter and installing the Bosch filter

For X-Trail



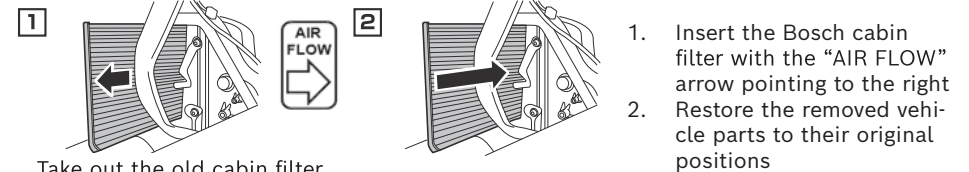
1. Take out the old cabin filter
1. Insert the Bosch cabin filter with the "AIR FLOW" arrow pointing to the right
2. Restore the removed vehicle parts to their original positions

For Serena



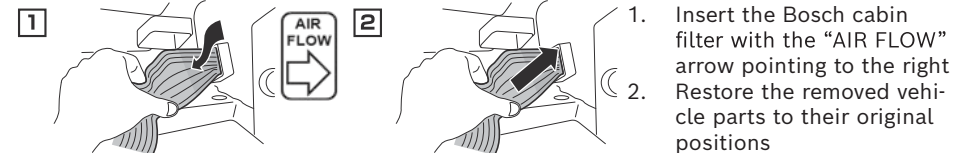
1. Take out the old cabin filter
1. Insert the Bosch cabin filter with the "AIR FLOW" arrow pointing to the right
2. Restore the removed vehicle parts to their original positions

For Dualis



1. Take out the old cabin filter
1. Insert the Bosch cabin filter with the "AIR FLOW" arrow pointing to the right
2. Restore the removed vehicle parts to their original positions

For Lafesta



1. Pinch and crush while pulling to remove the old filter
1. Insert the Bosch cabin filter with the "AIR FLOW" arrow pointing to the right
2. Restore the removed vehicle parts to their original positions

Attention

- This work procedure is an example and may vary across different vehicles.
- Bosch's cabin filter indicates airflow with an arrow on the product. Please note that the arrow may indicate "TOP" on other genuine or IAM products.
- Please read the "Precautions for installation and use" on the installation guide cover before commencing.
- NOTE: used cabin filters cannot be cleaned and reused.