



BOSCH

Invented for life

Thermal management

Spare parts for engine-cooling and climatic-comfort components



Thermal management

Overview

Profound knowledge of thermal systems in vehicles and decades of experience in development and production make Bosch a reliable partner for anything related to thermal management. This is also reflected in the comprehensive range of spare parts: Bosch supplies workshops with matching high-quality spare parts – no matter whether it's for climatic comfort or engine cooling.

Thermal management

A vehicle's thermal management system makes sure that the components are operated at their optimum temperature range whilst ensuring comfortable temperatures for the occupants inside the cabin. Engine component temperatures, depending on the operating point, can lower both fuel consumption and emissions – and increase the range of electric vehicles.

Engine cooling in line with the demands

Bosch engine cooling fans, coolant pumps and solenoid valves work reliably and prevent the engine overheating and possible damage to its components.

A strong partner of workshops

As a strong partner, Bosch supports automotive workshops – with the aim of satisfying their customers demands and increasing profitability. For this purpose, Bosch provides a broad range of services related to the workshop business. This includes high-quality products, reliable services and efficient diagnostic equipment.

Quick product availability

The international sales and logistics network ensures quick availability of Bosch spare parts.



Electric coolant pump

Product details

Bosch electric coolant pumps reliably and efficiently support different coolant circuits in both vehicles with combustion engines and electric vehicles. They are used for diverse applications; e.g. to support the heating circuits also in start/stop operation and to cool components such as turbochargers or charge air coolers.



Advantages at a glance

- ▶ **Highly-proven quality** thanks to production in line with OE quality guidelines
- ▶ **Long service life** of up to 30 000 hours due to high temperature and vibration resistance
- ▶ **Low failure risk** due to robust and compact design
- ▶ **Comprehensive product range** for 12/24-volt applications of different performance classes
- ▶ **Quick and easy installation**



Temperature sensor

Bosch temperature sensors **reliably measure** fuel, water, oil and air temperatures in order to ensure **flawless engine operation**.



Solenoid valve

Product details

Bosch solenoid valves ensure reliable control and monitoring of the coolant flow in secondary powertrain coolant circuits as well as for coolant circulation in line with the requirements in the case of cabin heating circuits. They are used for both vehicles with combustion engines and electric vehicles. Their high quality and robustness make them suitable for diverse applications.



Advantages at a glance

- ▶ **Highly-proven quality** thanks to production in line with OE quality guidelines
- ▶ **Long service life** with up to 3 million switching cycles thanks to the high-quality materials used
- ▶ **Resistance to dirt and leak throughout the entire service life** thanks to a robust and compact design
- ▶ **Comprehensive range** for 12/24-volt applications meeting different requirements
- ▶ **Easy to install** thanks to perfectly fitting connections



Cabin blower motor

As a complement in the area of thermal management, Bosch cabin blower motors ensure **reliable ventilation** of the cabin.



Engine cooling fans

Product details

Bosch engine cooling fans reliably ensure air flow across the radiator thus preventing the vehicle engine from overheating – even at low speeds. The comprehensive range comprises high-quality engine cooling fans, shrouds and complete modules.



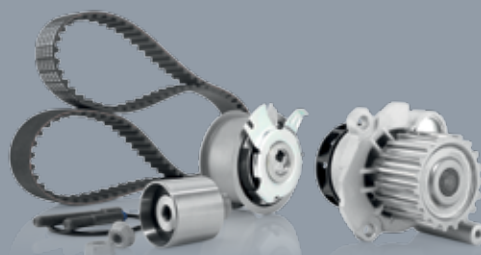
Advantages at a glance

- ▶ **Long service life** due to use of high-quality materials
- ▶ **Proven quality** thanks to rigorous standards in production and testing
- ▶ **Low-noise operation** due to accurate matching with the respective vehicle
- ▶ **Low failure rate** thanks to robust design
- ▶ **Increased functional reliability** due to protective functions integrated into the electric drive; e.g. automatic shutdown in case of any obstructions, thermal fuse and reverse polarity protection



Timing-belt / water-pump kit

Water pumps ensure the **circulation of coolant** required for heat dissipation. For water pumps driven by timing belts, the Bosch range includes specific timing-belt/water-pump kits.



Driven by efficiency

Bosch technologies are used worldwide in almost all vehicles. People, and assuring their mobility, is what we are focused on.

Therefore, we have dedicated the last 125 years of pioneering spirit and expertise in research and manufacturing to achieving this.

We continue to work on our unique combination of solutions for spare parts, diagnostic devices, workshop equipment and services:

- ▶ Solutions for efficient vehicle repairs
- ▶ Innovative workshop equipment and software
- ▶ One of the world's most comprehensive range of new and replacement parts
- ▶ Large network of wholesale customers, for quick and reliable parts supply
- ▶ Competent hotline support
- ▶ Comprehensive educational and training offers
- ▶ Targeted sales and marketing support

For additional information, please visit:

boschaftermarket.com

**What drives you,
drives us**

Robert Bosch GmbH
Automotive Aftermarket

Auf der Breit 4
76227 Karlsruhe
Germany

boschaftermarket.com



BOSCH
Invented for life

