

# Bosch Automotive Battery

Works any time, every time,  
all the time.

2023



# Batteries

## Overview

## Contents

1. Batteries Overview	3
2. The Bosch Battery Advantage	4
3. Powering Vehicles Across the Globe	5
4. Bosch Automotive Batteries: Product Range	6
5. Bosch S3/S4 Starter Battery	8
6. Bosch S4+/S5/S5+ Starter Battery	9
7. Bosch T4 Starter Battery	10
8. Bosch M6 Two-Wheeler VRLA Starter Battery	11
9. Battery Handling Procedure - Do's & Don'ts	12
10. Product Applications	13
Passenger Cars	14
Commercial Vehicles and Off-highway	35
Two-Wheelers	39
11. Technical Data	42

**Modern vehicles** are equipped with more and more components running on electrical energy. They need to be supplied with reliable sources of energy with high performance. Equipped with modern technology and featuring a corrosion-proof design, Bosch automotive batteries provide different types of vehicles with the energy they need – over long periods.

### Passenger-car starter batteries since 1927

Back in 1922, Bosch produced early motorcycle batteries. The first battery for cars was launched in 1927.

### Increased energy demand of vehicles

The energy demand of today's motor vehicles is much higher. More and more vehicles – of almost all vehicle segments – are equipped with safety systems, and convenience & comfort functions. The powerful Bosch batteries are particularly well-suited to meet all the energy requirements of modern vehicles.

### Spare parts, diagnostics, and services

Bosch provides workshops and retailers with full support for their battery business – from a single source. This includes a complete battery range, efficient diagnoses, and reliable services.



# The Bosch Battery Advantage

The superior build of Bosch Automotive batteries make them resistant to high temperatures in the engine compartment, minimising acid consumption and corrosion. This translates into minimum self-discharge, extreme tolerance for short-distance driving, and reliable operational safety throughout the operating life of the battery.



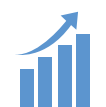
**Quick and Reliable Starting:** High-quality Bosch batteries are designed and tested to operate in all climatic conditions to ensure reliability and long-lasting performance.



**Trust:** Being one of the world's leading automotive systems manufacturers, Bosch ensures that every product meets the stringent quality demands of original equipment manufacturers.



**Precision:** Designed and tested solutions for every vehicle make and model.



**Extensive Market Coverage:** Bosch batteries are designed and engineered for a wide range of vehicle models.



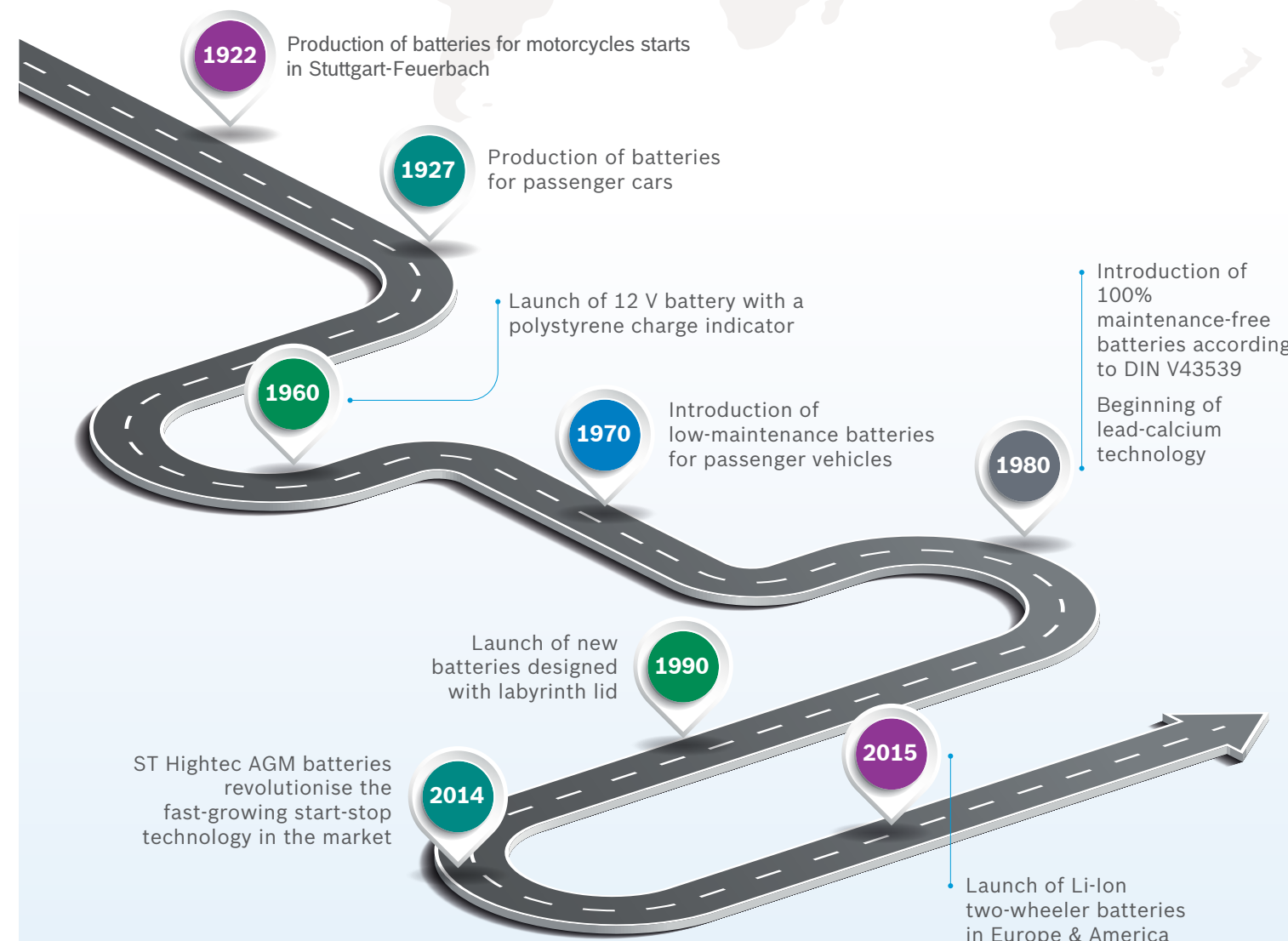
**Recognised for Quality and Innovation:** Technology from Bosch is used in practically every vehicle in the world. Bosch has more than 130 years of experience in automotive technologies and extensive knowledge of auto parts and diagnostics.



**Long Service Life:** Corrosion-resistant technology resists damage caused by heat and significantly increases the service life of the batteries.

# Powering Vehicles Across the Globe for Over Nine Decades

For Bosch, every battery is a technological milestone. In 1922, Bosch made its mark in battery production. Right from batteries for passenger cars, commercial vehicles, and tractors, to those for three- and two-wheelers, Bosch continuously revolutionises its line of products for the automotive industry across the globe.



# Bosch Automotive Batteries: Product Range

With a comprehensive product range of automotive batteries, efficient workshop equipment, and reliable technical service, **Bosch is a strong partner in the automotive batteries business.** Satisfied customers, efficient ordering and logistics efforts, state-of-the-art technologies – Bosch batteries stand out for numerous convincing USPs.

- ▶ First-class product quality and high safety
- ▶ Complete range consisting of more than 45 types of batteries from a single source
- ▶ Market coverage of 95%
- ▶ High availability of products across India



S3	S4	S4*	S5	S5*	T4	M6	
<p>Developed for optimum performance and excellent reliability in a wide range of applications and vehicle types. The special grid alloy is designed for a high degree of corrosion resistance ensuring long service life.</p>		<p>Powered by silver alloy technology for superior performance, these batteries are engineered for quick starts and long service life. The batteries are absolutely maintenance-free due to the best-in-class labyrinth vent design, and have a high degree of safety due to backfire protection.</p>			<p>The persistent Bosch T4 SLI commercial-vehicle / tractor / off-highway starter battery is ideal for average energy demands. Robust reinforced body design and special alloy grid for high degree of vibration resistance, provide excellent reliability.</p>		<p>The dynamic Bosch M6 two-wheeler VRLA (valve-regulated-lead-acid) battery is designed with AGM technology and particularly vibration-resistant.</p>



# Bosch S3/S4 Starter Battery

Efficient Bosch quality for a wide range of requirements and vehicle types – that is what Bosch S3/S4/S5 SLI batteries stand out for.



Parameter	S3	S4
Technology	Lead-acid SLI: Starting-lighting-ignition/starter battery with labyrinth lid	
Application		
Service Life	**	***
Cold-Starting Performance	*	**
Deep-Cycle Resistance	*	**
Number of Electrical Consumers	*	*
Suitability for Shorter Distances	*	*
Maintenance	Maintenance-Free	Maintenance-Free
Installation Inside Vehicle	Yes	Yes
Installation Angle	0°	0°
Warranty	12 months	18 months

## Advantages:

- ▶ **Outstanding starting power and a long service life:** Optimised current flow and less corrosion increase the cold-start performance
- ▶ **Absolutely maintenance-free:** The double lid with labyrinth design returns condensed water to the battery, thus reducing the water consumption, and preventing sudden leaks of acid if tilted
- ▶ **Particularly high corrosion resistance:** Ensured by optimised production processes
- ▶ **High safety:** Ensured by double backfire protection and integrated central degassing

# Bosch S4+/S5/S5+ Starter Battery

Bosch S4+ and S5+ SLI batteries, powered by silver alloy technology, are customised to meet the requirements of modern cars with several electrical consumers and advanced features such as start-stop systems.



Parameter	S4+	S5	S5+
Technology	Silver alloy technology and labyrinth lid		
Application			
Service Life	***	***	****
Cold-Starting Performance	***	***	***
Deep-Cycle Resistance	**	**	**
Number of Electrical Consumers	**	**	**
Suitability for Shorter Distances	**	***	***
Maintenance	Maintenance-Free	Maintenance-Free	Maintenance-Free
Installation Inside Vehicle	Yes	Yes	Yes
Installation Angle	0°	0°	0°
Warranty	24 months	30 Months	36 months

## Advantages:

- ▶ **Outstanding starting power and a long service life:** Optimised current flow and less corrosion increase the cold-start performance
- ▶ **Absolutely maintenance-free:** The double lid with labyrinth design returns condensed water to the battery, thus reducing the water consumption; and preventing sudden leaks of acid if tilted
- ▶ **Particularly high corrosion resistance:** Ensured by optimised production processes
- ▶ **High safety:** Ensured by double backfire protection and integrated central degassing

# Bosch T4 Starter Battery for Commercial Vehicles, Tractors, and Off-highway Applications

Bosch T4 for heavy duty vehicles, is ideal for average energy demands.



Parameter	T4
Technology	Lead-acid SLI: Starting-lighting-ignition/starter battery with labyrinth lid
Application	
Service Life	***
Cold-Starting Performance	**
Deep-Cycle Resistance	**
Number of Electrical Consumers	*
Suitability for Shorter Distances	*
Maintenance	Maintenance-Free
Installation Inside Vehicle	Yes
Installation Angle	0°
Warranty	18 months

## Advantages:

- ▶ **Outstanding starting power and a long service life:** Optimised current flow and less corrosion increase the cold-start performance
- ▶ **High resistance to vibrations:** The robust construction and design of T4 batteries meet the vibration resistance V3 according to EN-standards
- ▶ **Absolutely maintenance-free:** The double lid with labyrinth design returns condensed water to the battery, thus reducing the water consumption; and preventing sudden leaks of acid if tilted
- ▶ **Particularly high corrosion resistance:** Ensured by optimised production processes
- ▶ **High safety:** Ensured by double backfire protection and integrated central degassing

# Bosch M6 Two-Wheeler VRLA Starter Battery with AGM Technology

Equipped with Absorbent Glass Mat (AGM) technology, Bosch 2-Wheeler batteries are built to provide a powerful riding experience. A fine fibreglass mat placed within the plates immobilises the absorbed acid, making it available to the plates. This mechanism allows for quicker reaction time between the acid and the plate. VRLA batteries are armed with special plates that prevent the gases from escaping, thereby preventing water-loss. This enables zero maintenance and thus leading to longer service life of the battery.



Parameter	M6
Technology	AGM: Absorbent Glass Mat
Application	
Service Life	***
Cold-Starting Performance	***
Deep-Cycle Resistance	**
Number of Electrical Consumers	**
Suitability for Shorter Distances	***
Maintenance	Maintenance-Free
Installation Inside Vehicle	Yes
Installation Angle	0°
Warranty	24 months

## Advantages:

- ▶ **Outstanding starting power:** Bosch M6 AGM batteries do not lose performance because of frequent charging and discharging cycles. This ensures top starting performance – even though frequently subject to short-distance trips
- ▶ **Long service life:** AGM technology keeps the self-discharge rates low thus increasing the service life of the battery by 20% in comparison with conventional starter batteries
- ▶ **Ready to use / maintenance-free:** The battery comes with an acid pack and a filling aid for initial filling
- ▶ **High resistance to vibrations:** Powered by AGM technology, these batteries are particularly vibration-resistant making them perfectly suitable for powersports and off-road applications
- ▶ **Increased cold-starting reliability:** AGM technology features a higher resistance to deep discharge and a higher cold-starting performance than conventional starter batteries

# Automotive Battery Handling Procedure

Tips from Bosch



## DO's & DON'Ts



Work safely



Recharge battery immediately after discharge



Inspect the battery and auto-electrical system regularly



Use petroleum jelly for cables, clamps, and terminals



Add demineralised water in case of a drop in the electrolyte level



Do not use an unregulated high-voltage cleaner



Do not disconnect the battery cable when the engine is running



Do not top-up with tap water



Do not ignite sparks near the battery



Do not apply grease to cables, clamps, and terminals



Do not pour acid in case of a drop in the electrolyte level



Avoid metallic contact with the terminals as this can result in short circuits and sparking

## Product Applications



## Passenger Cars

Model Description	S3	S4	S4+	T4	S5	S5+
<b>AUDI</b>						
35 TDI	None	None		None	F 002 H50 018	
Q3 [8U]	None	None		None	F 002 H50 016	
Q5 2.0 TDI quattro	None	None		None	F 002 H50 018	
<b>CHEVROLET</b>						
Aveo 1.2i	None	None		None	F 002 H50 028	
Aveo 1.4i	None	None		None	F 002 H50 028	
Aveo 1.6i	None	None		None	F 002 H50 028	
Beat 0.9D	None	None		None	F 002 H50 070	
Beat 1.2i	None	None		None	F 002 H50 070	
Captiva 2.0 CRDi 4x4	None	None		None	F 002 H50 023	
Enjoy 1.3D	F 002 H50 044	None		None	None	
Enjoy 1.3D (D) 56 Kw (2013.05 -2017.08)	None	F 002 H50 064	F 002 H50 048	None	None	
Optra 2.0i 16V	None	None		None	F 002 H50 032	
Sail 1.2 i	None	None		None	F 002 H50 070	
Sail 1.3 D	F 002 H50 044	None		None	None	
Sail 1.3 D (D) 57 Kw (2013.02 -2017.12)	None	F 002 H50 064	F 002 H50 048	None	None	
Sail U-VA 1.2 i	None	None		None	F 002 H50 070	
Sail U-VA 1.3 D (D) 57 Kw (2012.11 -2015.06)	None	F 002 H50 064	F 002 H50 048	None	None	
Sail U-VA 1.3 D (D) 57 Kw (2012.11 -2017.05)	None	None	F 002 H50 048	None	None	
Spark 1.0 LPG/CNG	F 002 H50 045	None		None	F 002 H50 025	F 002 H50 076
Spark 1.0 LPG/CNG (P+GAS) 44 Kw (2009.06 -2014.04)	None	F 002 H50 015	F 002 H50 047	None	None	
Tavera 2.0D	F 002 H50 044	None		None	None	
Tavera 2.0D (D) 77 Kw (2012.03 -2017.12)	None	F 002 H50 064	F 002 H50 048	None	None	
Tavera 2.5D	F 002 H50 044	None		None	None	
Tavera 2.5D (D) 59 Kw (2004.05 -2012.02)	None	F 002 H50 064	F 002 H50 048	None	None	
<b>DACIA</b>						
Duster [HS]	None	None		None	F 002 H50 028	
Lodgy [JS]	None	None		None	F 002 H50 028	
<b>DAEWOO</b>						
Cielo 1.5i	None	None		None	F 002 H50 027	
Matiz 0.8i	None	None		None	F 002 H50 025	F 002 H50 076
Matiz 0.8i (P) 38 Kw (1998.11 -2002.02)	F 002 H50 041	F 002 H50 011	F 002 H50 046	None	None	
Matiz 0.8i (P) 38 Kw (1998.11 -2002.02)	F 002 H50 041	F 002 H50 011	F 002 H50 047	None	None	
Matiz 0.8i (P) 38 Kw (1998.11 -2002.02)	F 002 H50 041	F 002 H50 015	F 002 H50 046	None	None	
Matiz 0.8i (P) 38 Kw (1998.11 -2002.02)	F 002 H50 041	F 002 H50 015	F 002 H50 047	None	None	
Matiz 0.8i (P) 38 Kw (1998.11 -2002.02)	F 002 H50 045	F 002 H50 011	F 002 H50 046	None	None	
Matiz 0.8i (P) 38 Kw (1998.11 -2002.02)	F 002 H50 045	F 002 H50 011	F 002 H50 047	None	None	
Matiz 0.8i (P) 38 Kw (1998.11 -2002.02)	F 002 H50 045	F 002 H50 015	F 002 H50 046	None	None	
Matiz 0.8i (P) 38 Kw (1998.11 -2002.02)	F 002 H50 045	F 002 H50 015	F 002 H50 047	None	None	

## Passenger Cars

Model Description	S3	S4	S4+	T4	S5	S5+
Nexia 1.6i	None	None		None	F 002 H50 027	
<b>DATSUN</b>						
GO 1.2	F 002 H50 045	None	F 002 H50 047	None	F 002 H50 025	F 002 H50 076
GO 1.2 (P) 49 Kw (2014.03 -2019.09)	None	F 002 H50 015	F 002 H50 047	None	None	
GO+ 1.2	F 002 H50 045	None	F 002 H50 047	None	F 002 H50 025	F 002 H50 076
GO+ 1.2 (P) 49 Kw (2015.01-->)	None	F 002 H50 015	F 002 H50 047	None	None	
Redi-Go 0.8	F 002 H50 045	None	F 002 H50 047	None	F 002 H50 025	F 002 H50 076
Redi-Go 0.8 (P) 40 Kw (2016.06-->)	None	F 002 H50 015	F 002 H50 047	None	None	
Redi-Go 1.0	None	None		None	F 002 H50 038	
<b>FIAT</b>						
Linea 1.2 TD (D) 67 Kw (2009.01-->)	None	None		None	F 002 H50 070	
Linea 1.2 TD (P) (2008.12 -2017.12)	None	None		None	F 002 H50 026	
Linea 1.3 Diesel Classic	None	None		None	F 002 H50 070	
Linea 1.4 i.e. 16V	None	None		None	F 002 H50 026	
Punto 1.2D	None	None		None	F 002 H50 070	
Punto 1.4i	None	None		None	F 002 H50 026	
Punto Evo 1.2	None	None		None	F 002 H50 026	
Punto Evo 1.4 MultiJet	None	None		None	F 002 H50 026	
Punto [118]	None	None		None	F 002 H50 026	
Siena 1.2 i.e. 8V	None	None		None	F 002 H50 026	
<b>FORCE MOTORS</b>						
Challenger 1.8 Diesel	None	None		F 002 H50 008	None	
Challenger 2.4 Diesel	None	None		F 002 H50 008	None	
Challenger 2.6 Diesel	None	None		F 002 H50 008	None	
Cruiser Classic 2.6 Diesel	None	None		F 002 H50 008	None	
Force One	None	None		F 002 H50 008	None	
Gama 2.6 Diesel	None	None		F 002 H50 008	None	
Gama Classic 2.6 Diesel	None	None		F 002 H50 008	None	
Gama Classic 2.6 Diesel 4WD	None	None		F 002 H50 008	None	
Gurkha 2.6D 4WD	None	None		F 002 H50 008	None	
Judo 2.4 Diesel	None	None		F 002 H50 008	None	
Judo 2.4 Diesel 4WD	None	None		F 002 H50 008	None	
Kargo King 2.6 Diesel	None	None		F 002 H50 008	None	
Toofan Classic 2.6 Diesel	None	None		F 002 H50 008	None	
Trax 2.4D Tempo	None	None		F 002 H50 008	None	
<b>FORD</b>						
3.0 CRDI 4WD	None	None		None	F 002 H50 026	
ECOSPORT BS-VI	None	None		None	F 002 H50 026	
EcoSport 1	None	None		None	F 002 H50 026	
EcoSport 1.5	None	None		None	F 002 H50 026	
EcoSport 1.5 (P) 91 Kw (2017.11-->)	None	None		None	F 002 H50 026	
EcoSport 1.5 (P) 91 Kw (2017.11-->)	None	None		None	F 002 H50 027	





## Passenger Cars

Model Description	S3	S4	S4+	T4	S5	S5+
EcoSport 1.5 TD (D) 67 Kw (2013.06 -2015.12)	None	None		None	F 002 H50 026	
EcoSport 1.5 TD (D) 74 Kw (2016.01-->)	None	None		None	F 002 H50 026	
EcoSport 1.5 TD (D) 74 Kw (2016.01-->)	None	None		None	F 002 H50 027	
Endeavour 2.2TD 4x2	None	None		None	F 002 H50 027	
Endeavour 2.2TD 4x2 (D) 118 Kw (2016.01-->)	None	None		None	F 002 H50 026	
Endeavour 2.2TD 4x2 (D) 118 Kw (2016.01-->)	None	None		None	F 002 H50 027	
Endeavour 2.2TD 4x4 (D) 118 Kw (2016.01-->)	None	None		None	F 002 H50 026	
Endeavour 2.2TD 4x4 (D) 118 Kw (2016.01-->)	None	None		None	F 002 H50 027	
Endeavour 2.5 Turbo intercooled	None	None		None	F 002 H50 023	
Endeavour 2.5 Turbo intercooled (D) 105 Kw (2007.06 -2015.10)	None	None		None	F 002 H50 023	
Endeavour 2.5 Turbo intercooled (D) 105 Kw (2007.06 -2015.10)	None	None		None	F 002 H50 026	
Endeavour 2.5 Turbo intercooled (D) 81 Kw (2001.11 -2007.05)	None	None		None	F 002 H50 023	
Endeavour 2.5 Turbo intercooled (D) 81 Kw (2001.11 -2007.05)	None	None		None	F 002 H50 026	
Endeavour 2.5 Turbo intercooled 4WD	None	None		None	F 002 H50 026	
Endeavour 3.0 Turbo intercooled 4WD	None	None		None	F 002 H50 026	
Endeavour 3.2TD 4x4	None	None		None	F 002 H50 027	
Endeavour 3.2TD 4x4 (D) 147 Kw (2016.01-->)	None	None		None	F 002 H50 026	
Endeavour 3.2TD 4x4 (D) 147 Kw (2016.01-->)	None	None		None	F 002 H50 027	
Escort	None	None		None	F 002 H50 018	
Escort 1.3i	None	None		None	F 002 H50 026	
Fiesta 1.4 Turbodiesel	None	None		None	F 002 H50 026	
Fiesta 1.5 Turbodiesel	None	None		None	F 002 H50 026	
Fiesta 1.5i	None	None		None	F 002 H50 026	
Fiesta 1.6i	None	None		None	F 002 H50 026	
Figo 1.2 Ti-VCT	None	None		None	F 002 H50 070	
Figo 1.4D	None	None		None	F 002 H50 026	
Figo 1.5 TDCi	None	None		None	F 002 H50 026	
Figo Aspire 1.2 Ti-VCT	None	None		None	F 002 H50 026	
Figo Aspire 1.5 TDCi	None	None		None	F 002 H50 026	
Figo Aspire 1.5 TDCi (D) 74 Kw (2015.09-->)	None	None		None	F 002 H50 027	
Figo Aspire 1.5 TDCi (D) 74 Kw (2015.09-->)	None	None		None	F 002 H50 028	
Figo Aspire 1.5 Ti-VCT	None	None		None	F 002 H50 026	
Figo Aspire 1.5 Ti-VCT	None	None		None	F 002 H50 028	
Figo [B517]	None	None		None	F 002 H50 026	
Freestyle Hatchback (D) 74 Kw (2018.04-->)	None	None		None	F 002 H50 026	

## Passenger Cars

Model Description	S3	S4	S4+	T4	S5	S5+
Freestyle Hatchback (D) 74 Kw (2018.04-->)	None	None		None	F 002 H50 027	
Freestyle Hatchback (D) 74 Kw (2018.04-->)	None	None		None	F 002 H50 028	
Freestyle Hatchback (P) 70.79 Kw (2018.04-->)	None	None		None	F 002 H50 026	
Freestyle Hatchback (P) 70.79 Kw (2018.04-->)	None	None		None	F 002 H50 027	
Freestyle Hatchback (P) 70.79 Kw (2018.04-->)	None	None		None	F 002 H50 028	
Fusion 1.4 Diesel 8V	None	None		None	F 002 H50 026	
Fusion 1.6i 16V	None	None		None	F 002 H50 026	
Ikon 1.3i	None	None		None	F 002 H50 026	
Ikon 1.3i 8V	None	None		None	F 002 H50 026	
Ikon 1.4 Diesel Turbo	None	None		None	F 002 H50 026	
Ikon 1.8 Diesel	None	None		None	F 002 H50 026	
Mondeo III	None	None		None	F 002 H50 016	
<b>HINDUSTAN MOTORS LIMITED (HML)</b>						
Ambassador 1.5	F 002 H50 044	None		None	None	
Ambassador 1.5 (P) 26 Kw (1980.01 -1996.04)	None	F 002 H50 064	F 002 H50 048	None	None	
Ambassador 1.5 D	None	None		F 002 H50 008	None	
Ambassador 1.5 Diesel	F 002 H50 045	None		None	F 002 H50 025	F 002 H50 076
Ambassador 1.5 Diesel (D) 26 Kw (1990.04-->)	None	F 002 H50 015	F 002 H50 047	None	None	
Ambassador 1.8i	F 002 H50 044	None		None	None	
Ambassador 1.8i (P) 54 Kw (1994.01 -1998.09)	F 002 H50 042	None		F 002 H50 006	None	
Ambassador 1.8i (P) 55 Kw (1998.09 -2000.03)	None	F 002 H50 064	F 002 H50 048	None	None	
Ambassador 1.8i (P) 61 Kw (2000.05 -2002.01)	None	F 002 H50 064	F 002 H50 048	None	None	
Ambassador 1.8i (P+GAS) 53 Kw (2003.07-->)	None	F 002 H50 064	F 002 H50 048	None	None	
Ambassador 2.0	None	None		F 002 H50 008	None	
Ambassador 2000 2.0 Diesel	None	None		F 002 H50 008	None	
Contessa Classic 1.8 CNG	None	None		F 002 H50 008	None	
Contessa Classic 1.8 GLX	F 002 H50 044	None		None	None	
Contessa Classic 1.8 GLX (P) 55 Kw (1983.12 -1999.08)	None	F 002 H50 064	F 002 H50 048	None	None	
Contessa Classic 1.8i GLX	F 002 H50 044	None		None	None	
Contessa Classic 1.8i GLX (P) 60 Kw (1999.09 -2001.05)	None	F 002 H50 064	F 002 H50 048	None	None	
Contessa Classic 2.0 Diesel	None	None		F 002 H50 008	None	
<b>HONDA</b>						
Accord 2.3i 16V	None	None		None	F 002 H50 032	
Accord 2.4i 16V	None	None		None	F 002 H50 032	
Accord 3.0i	None	None		None	F 002 H50 032	
Accord 3.5i	None	None		None	F 002 H50 032	
Amaze 1.2	F 002 H50 045	None	F 002 H50 047	None	F 002 H50 025	F 002 H50 076



## Passenger Cars

Model Description	S3	S4	S4+	T4	S5	S5+
Amaze 1.2 (P) 65 Kw (2013.04-->)	None	F 002 H50 015	F 002 H50 047	None	None	
Amaze First Gen 1.5	None	None		None	F 002 H50 032	
Amaze Second Gen 1.2	None	None	F 002 H50 047	None	None	
Amaze Second Gen 1.2 (P) 66 Kw (2013.04-->)	None	F 002 H50 015		None	F 002 H50 025	
Amaze Second Gen 1.5	None	None		None	F 002 H50 032	
BR-V 1.5 i-VTEC	F 002 H50 045	None		None	None	F 002 H50 076
BR-V 1.5 i-VTEC (D) 74 Kw (2016.06-->)	None	None		None	F 002 H50 032	
BR-V 1.5 i-VTEC (P) 86 Kw (2016.06 -2017.12)	None	F 002 H50 015	F 002 H50 047	None	F 002 H50 025	
Brio 1.2	F 002 H50 045	None	F 002 H50 047	None	F 002 H50 025	F 002 H50 076
Brio 1.2 (P) 64 Kw (2011.09-->)	None	F 002 H50 015	F 002 H50 047	None	None	
City 1.5	F 002 H50 045	None		None	F 002 H50 032	F 002 H50 076
City 1.5 (D) 74 Kw (2013.12 -2017.01)	None	None		None	F 002 H50 032	
City 1.5 (P) 88 Kw (2014.02 -2018.12)	None	F 002 H50 015	F 002 H50 047	None	F 002 H50 025	
City 1.5 (P) 88 Kw (2018.01-->)	None	F 002 H50 015	F 002 H50 047	None	F 002 H50 025	
City 1.5 i 8V	F 002 H50 045	None	F 002 H50 047	None	F 002 H50 025	F 002 H50 076
City 1.5 i 8V (P) 57 Kw (2003.10 -2006.12)	None	F 002 H50 015	F 002 H50 047	None	None	
City 1.5i 16V	F 002 H50 045	None	F 002 H50 047	None	F 002 H50 025	F 002 H50 076
City 1.5i 16V (P) 74 Kw (1998.02 -2003.10)	None	F 002 H50 015	F 002 H50 047	None	None	
City 1.5i 16V (P) 87 Kw (2008.09 -2013.12)	None	F 002 H50 015	F 002 H50 047	None	None	
City 1.5i 16V VTEC	F 002 H50 045	None	F 002 H50 047	None	F 002 H50 025	F 002 H50 076
City 1.5i 16V VTEC (P) 78 Kw (2000.08 -2003.10)	None	F 002 H50 015	F 002 H50 047	None	None	
City 1.5i ZX VTEC	F 002 H50 045	None	F 002 H50 047	None	F 002 H50 025	F 002 H50 076
City 1.5i ZX VTEC (P) 74 Kw (2005.10 -2008.10)	None	F 002 H50 015	F 002 H50 047	None	None	
City [2CT]	None	F 002 H50 015		None	None	
Civic 1.8i	None	None		None	F 002 H50 032	
Jazz 1.2	F 002 H50 045	None		None	None	F 002 H50 076
Jazz 1.2 (P) 66 Kw (2015.06 -2018.07)	None	F 002 H50 015	F 002 H50 047	None	F 002 H50 025	
Jazz 1.2 (P) 66 Kw (2018.07-->)	None	F 002 H50 015	F 002 H50 047	None	F 002 H50 025	
Jazz 1.5 TD	F 002 H50 045	None		None	F 002 H50 025	F 002 H50 076
Jazz 1.5 TD (D) 74 Kw (2015.06-->)	None	F 002 H50 015	F 002 H50 047	None	None	
Mobilio 1.5 TD	None	None		None	F 002 H50 032	
Mobilio 1.5 i	F 002 H50 045	None		None	F 002 H50 025	F 002 H50 076
Mobilio 1.5 i (P) 86 Kw (2013.09-->)	None	F 002 H50 015	F 002 H50 047	None	None	
WR-V 1.2	F 002 H50 045	None		None	F 002 H50 025	F 002 H50 076
WR-V 1.2 (P) 66 Kw (2017.03-->)	None	F 002 H50 015	F 002 H50 047	None	None	
WR-V 1.5 TD	None	None		None	F 002 H50 032	

**HYUNDAI**

## Passenger Cars

Model Description	S3	S4	S4+	T4	S5	S5+
Accent 1.5 CNG	None	None		None	F 002 H50 028	
Accent 1.5 DLS	None	None		None	F 002 H50 028	
Creta 1.4 GDI	None	None		None	F 002 H50 070	
Creta 1.4 TD	None	None		None	F 002 H50 069	
Creta 1.4 TD	None	None		None	F 002 H50 073	
Creta 1.6	None	None		None	F 002 H50 069	
Creta 1.6 CRDi	None	None		None	F 002 H50 073	
Elantra [MD, UD]	None	None		None	F 002 H50 073	
Elite i20 1.4	None	None		None	F 002 H50 069	
Elite i20 [IB]	None	None		None	F 002 H50 069	
Eon 0.8 i	None	None	F 002 H50 071	None	None	
Eon 1.0 Magna Plus	None	None		None	F 002 H50 038	
Eon LPG 0.8	None	None		None	F 002 H50 038	
Grand i10 1.1 CRDi	None	None		None	F 002 H50 069	
Grand i10 1.1 TD	None	None		None	F 002 H50 069	
Grand i10 1.2	None	None		None	F 002 H50 038	
Grand i10 1.2 (P) 61 Kw (2013.09 -2020.08)	None	None		None	F 002 H50 038	
Grand i10 1.2 (P) 61 Kw (2013.09 -2020.08)	None	None		None	F 002 H50 069	
Grand i10 1.2 CRDi	None	None		None	F 002 H50 073	
Grand i10 Nios 1.0 Turbo GDi	None	None		None	F 002 H50 070	
Grand i10 Nios 1.2 Kappa	None	None		None	F 002 H50 038	
Santro 1.0i 12V	F 002 H50 041	None		None	F 002 H50 021	
Santro 1.0i 12V (P) 40 Kw (1998.09 -2002.01)	None	F 002 H50 011	F 002 H50 046	None	None	
Santro 1.0i 12V (P+GAS) 46 Kw (2007.07 -2014.11)	None	F 002 H50 011	F 002 H50 046	None	None	
Santro 1.1	None	None		None	F 002 H50 038	
Santro 1.1 i 12V	F 002 H50 041	None		None	F 002 H50 021	
Santro 1.1 i 12V (P) 46 Kw (2002.03 -2003.07)	None	F 002 H50 011	F 002 H50 046	None	None	
Terracan 2.9 CRDi	None	None		None	F 002 H50 033	
Tucson 2.0 Diesel 4WD	None	None		None	F 002 H50 033	
Venue 1.0	None	None		None	F 002 H50 038	
Venue 1.5 CRDi	None	None		None	F 002 H50 028	
Venue Kappa 1.0 Turbo GDi	None	None		None	F 002 H50 070	
Venue Kappa 1.2 MPI	None	None		None	F 002 H50 038	
Venue U2 1.4 CRDi	None	None		None	F 002 H50 028	
Verna 1.4 i	None	None		None	F 002 H50 069	
Verna 1.4D	None	None		None	F 002 H50 073	
Verna 1.4D (D) 66 Kw (2011.05 -2015.02)	None	None		None	F 002 H50 069	
Verna 1.4D (D) 66 Kw (2011.05 -2015.02)	None	None		None	F 002 H50 073	
Verna 1.5 CRDi (D) 82 Kw (2006.10 -2011.05)	None	None		None	F 002 H50 032	
Verna 1.5 CRDi (D) 84.5 Kw (2020.05-->)	None	None		None	F 002 H50 028	
Verna 1.6	None	None		None	F 002 H50 069	
Verna 1.6 TD	None	None		None	F 002 H50 028	





## Passenger Cars

Model Description	S3	S4	S4+	T4	S5	S5+
Verna 1.6D	None	None		None	F 002 H50 032	
Verna 1.6D (D) 94 Kw (2011.05 -2013.06)	None	None		None	F 002 H50 032	
Verna 1.6D (D) 94 Kw (2011.05 -2013.06)	None	None		None	F 002 H50 069	
Verna 1.6i	None	None		None	F 002 H50 069	
Xcent 1.1 TD	None	None		None	F 002 H50 038	
Xcent 1.2	None	None		None	F 002 H50 038	
Xcent 1.2 CRDi	None	None		None	F 002 H50 073	
i10 1.1 i	None	None		None	F 002 H50 038	
i10 1.1 i	None	None		None	F 002 H50 069	
i10 1.2 i 16V	None	None		None	F 002 H50 038	
i10 [PA]	None	None		None	F 002 H50 038	
i20 1.2i	None	None		None	F 002 H50 069	
i20 1.2i 16V	None	None		None	F 002 H50 069	
i20 1.4 TD	None	None		None	F 002 H50 069	
i20 1.4 TD	None	None		None	F 002 H50 073	
i20 Active 1.2	None	None		None	F 002 H50 069	
i20 [IB] Active	None	None		None	F 002 H50 073	
<b>JEEP</b>						
Compass 1.4 MultiAir	None	None		None	F 002 H50 016	
Compass 2.0 Multijet	None	None		None	F 002 H50 016	
Compass 2.0 TD 4X4	None	None		None	F 002 H50 016	
<b>KIA</b>						
Seltos 1.4 T-GDI	None	None		None	F 002 H50 070	
Seltos 1.5	None	None		None	F 002 H50 070	
Seltos 1.5 CRDi	None	None		None	F 002 H50 028	
Seltos CRDi VGT BS VI	None	None		None	F 002 H50 028	
Seltos G 1.5 Smartstream	None	None		None	F 002 H50 070	
Sonet 1.0 T-GDI	None	None		None	F 002 H50 070	
Sonet 1.4 T-GDI	None	None		None	F 002 H50 070	
<b>MAHINDRA</b>						
Armada 2.1 Diesel	F 002 H50 042	None		F 002 H50 006	None	
Armada 2.1 Diesel 4WD	F 002 H50 042	None		F 002 H50 006	None	
Armada 2.5 Diesel	F 002 H50 042	None		F 002 H50 006	None	
Armada 2.5 Diesel 4WD	F 002 H50 042	None		F 002 H50 006	None	
Armada 4WD	F 002 H50 042	None		F 002 H50 006	None	
Armada Grand 2.5 Diesel	F 002 H50 042	None		F 002 H50 006	None	
Armada Grand 2.5 Diesel 4WD	F 002 H50 042	None		F 002 H50 006	None	
Bolero 1.5 TD Power+ (D) 51 Kw (2016.09-->)	None	F 002 H50 064	F 002 H50 048	None	None	
Bolero 2.5 BS II	None	None		None	F 002 H50 033	
Bolero 2.5 BS III	None	None		None	F 002 H50 033	
Bolero 2.5 Diesel	F 002 H50 044	None		None	F 002 H50 033	
Bolero 2.5 Diesel (D) 46 Kw (2011.11-->)	None	F 002 H50 064	F 002 H50 048	None	None	
Bolero 2.5 Diesel (D) 53 Kw (2000.08 -2005.04)	None	F 002 H50 064	F 002 H50 048	None	None	
Bolero 2.5 Diesel 4WD	None	None		None	F 002 H50 033	
Bolero Invader 1.8i	None	None		None	F 002 H50 033	

## Passenger Cars

Model Description	S3	S4	S4+	T4	S5	S5+
Bolero Invader 2.5 Diesel	None	None		None	F 002 H50 033	
Bolero Invader 2.5 Diesel 4WD	None	None		None	F 002 H50 033	
Bolero Invader GLX 2.5 Diesel	None	None		None	F 002 H50 033	
Bolero Invader GLX 2.5 Diesel 4WD	None	None		None	F 002 H50 033	
Bolero XL 2.5 Diesel	None	None		None	F 002 H50 033	
Bolero XLS 2.5 Diesel	None	None		None	F 002 H50 033	
CL 340 DP 2.1 Diesel 4WD	F 002 H50 042	None		F 002 H50 006	None	
CL 500 DI 4x2	F 002 H50 042	None		F 002 H50 006	None	
CL 500 DI 4x4	F 002 H50 042	None		F 002 H50 006	None	
CL 500/550 2.1	F 002 H50 042	None		F 002 H50 006	None	
CL 500/550 2.5 Diesel	F 002 H50 042	None		F 002 H50 006	None	
CL 500/550 DI 2.5 Diesel 4WD	F 002 H50 042	None		F 002 H50 006	None	
CL 500/550 MDI 2.5 Diesel	F 002 H50 042	None		F 002 H50 006	None	
CL 500/550 MDI 2.5 Diesel 4WD	F 002 H50 042	None		F 002 H50 006	None	
Classic 2.1 Diesel 4WD	F 002 H50 042	None		F 002 H50 006	None	
Commander 2.1 CNG	F 002 H50 042	None		F 002 H50 006	None	
Commander 2.1D 4WD Hard Top	F 002 H50 042	None		F 002 H50 006	None	
Commander 2.1D Hard Top	F 002 H50 042	None		F 002 H50 006	None	
Commander 2.5 Diesel	F 002 H50 042	None		F 002 H50 006	None	
Commander 2.5 Diesel 4WD	F 002 H50 042	None		F 002 H50 006	None	
Commander 650 2.5 Diesel	F 002 H50 042	None		F 002 H50 006	None	
Commander 655 2.5 Diesel	F 002 H50 042	None		F 002 H50 006	None	
Commander 655 2.5 Diesel 4WD	F 002 H50 042	None		F 002 H50 006	None	
Commander 750 2.1 Diesel	F 002 H50 042	None		F 002 H50 006	None	
Commander 750 2.1 Diesel 4WD	F 002 H50 042	None		F 002 H50 006	None	
KUV100 1.2	F 002 H50 044	None		None	None	
KUV100 1.2 (P) 61 Kw (2016.01-->)	None	F 002 H50 064	F 002 H50 048	None	None	
KUV100 1.2 TD	F 002 H50 044	None		None	None	
KUV100 1.2 TD (D) 57 Kw (2016.01-->)	None	F 002 H50 064	F 002 H50 048	None	None	
Logan 1.4i	None	None		None	F 002 H50 028	
Marshal 2.5 Diesel	F 002 H50 042	None		F 002 H50 006	None	
Marshal 2.5 Diesel 4WD	F 002 H50 042	None		F 002 H50 006	None	
Quanto 1.5D	F 002 H50 044	None		None	None	
Quanto 1.5D (D) 74 Kw (2012.09 -2016.04)	None	F 002 H50 064	F 002 H50 048	None	None	
Scorpio 2.0	None	F 002 H50 064		None	None	
Scorpio 2.0i	F 002 H50 044	None		None	None	
Scorpio 2.0i (P) 84 Kw (2002.06 -2006.03)	None	F 002 H50 064	F 002 H50 048	None	None	
Scorpio 2.2 TD	F 002 H50 044	None		None	None	





## Passenger Cars

Model Description	S3	S4	S4+	T4	S5	S5+
Scorpio 2.2 TD (D) 88 Kw (2015.01-->)	None	F 002 H50 064	F 002 H50 048	None	None	
Scorpio 2.2 TD 4WD	F 002 H50 044	None		None	None	
Scorpio 2.2 TD 4WD (D) 88 Kw (2015.01-->)	None	F 002 H50 064	F 002 H50 048	None	None	
Scorpio 2.2 TD 4x4	None	F 002 H50 064		None	None	
Scorpio 2.2 mHawk140 CRDe 2WD	None	F 002 H50 064		None	None	
Scorpio 2.5D	F 002 H50 044	None		None	None	
Scorpio 2.5D (D) 52 Kw (2007.10 -2014.10)	None	F 002 H50 064	F 002 H50 048	None	None	
Scorpio 2.5D (D) 55 Kw (2015.01-->)	None	F 002 H50 064	F 002 H50 048	None	None	
Scorpio 2.6 CRDe	F 002 H50 044	None		None	None	
Scorpio 2.6 CRDe (D) 85 Kw (2005.02 -2009.06)	None	F 002 H50 064	F 002 H50 048	None	None	
Scorpio 2.6 Diesel Turbo	F 002 H50 044	None		None	None	
Scorpio 2.6 Diesel Turbo (D) 80 Kw (2002.06 -2006.03)	None	F 002 H50 064	F 002 H50 048	None	None	
Scorpio 2.6 Diesel Turbo 4WD	F 002 H50 044	None		None	None	
Scorpio 2.6 Diesel Turbo 4WD (D) 80 Kw (2002.06 -2006.03)	None	F 002 H50 064	F 002 H50 048	None	None	
TUV300 1.5 TD	F 002 H50 044	None		None	None	
TUV300 1.5 TD (D) 62 Kw (2015.09-->)	None	F 002 H50 064	F 002 H50 048	None	None	
TUV300 1.5 TD Auto (D) 59 Kw (2015.09-->)	None	F 002 H50 064	F 002 H50 048	None	None	
Thar 2.5 TD	F 002 H50 044	None		None	None	
Thar 2.5 TD (D) 47 Kw (2010.12 -2013.04)	None	F 002 H50 064	F 002 H50 048	None	None	
Thar 2.5D 4x4	F 002 H50 044	None		None	None	
Thar 2.5D 4x4 (D) 47 Kw (2010.12 -2013.04)	None	F 002 H50 064	F 002 H50 048	None	None	
Thar 2.5D 4x4 (D) 77 Kw (2010.12 -2013.04)	None	F 002 H50 064	F 002 H50 048	None	None	
Verito 1.4i	None	None		None	F 002 H50 070	
Verito Vibe 1.5 D	None	None		None	F 002 H50 027	
XUV300 1.2	None	None		None	F 002 H50 028	
XUV300 1.5	None	None		None	F 002 H50 028	
XUV500 2.2D	None	None		None	F 002 H50 023	
XUV500 2.2D 4x4	None	None		None	F 002 H50 023	
XYLO	None	F 002 H50 064		None	None	
XYLO 2.2 TD mHawk	F 002 H50 044	None		None	None	
XYLO 2.2 TD mHawk (D) 91 Kw (2013.05-->)	None	F 002 H50 064	F 002 H50 048	None	None	
XYLO 2.5 TD MDI	F 002 H50 044	None		None	None	
XYLO 2.5 TD MDI (D) 68 Kw (2009.01 -2012.02)	None	F 002 H50 064	F 002 H50 048	None	None	
XYLO 2.5 TD mEagle	None	F 002 H50 064		None	None	
<b>MARUTI</b>						
1000 1.0i 8V	F 002 H50 041	F 002 H50 011		None	F 002 H50 021	
800 0.8 i 6V	F 002 H50 041	F 002 H50 011		None	F 002 H50 021	
800 0.8i 12V	F 002 H50 041	F 002 H50 011		None	F 002 H50 021	

## Passenger Cars

Model Description	S3	S4	S4+	T4	S5	S5+
800 0.8i 6V	F 002 H50 041	F 002 H50 011		None	F 002 H50 021	
800 LPG	F 002 H50 041	F 002 H50 011		None	F 002 H50 021	
A-Star 1.0i 12V	F 002 H50 041	F 002 H50 011		None	F 002 H50 021	
ALTO 800 BS-VI	None	None		None	F 002 H50 025	F 002 H50 076
ALTO 800 BS-VI (P) 35.3 Kw (2020.03-->)	None	F 002 H50 015	F 002 H50 047	None	None	
ALTO BS-VI CNG	None	None		None	F 002 H50 025	F 002 H50 076
ALTO BS-VI CNG (P+GAS) 30 Kw (2019.04-->)	None	F 002 H50 015	F 002 H50 047	None	None	
Alto 0.8i	F 002 H50 045	None		None	F 002 H50 025	F 002 H50 076
Alto 0.8i (P+GAS) (2009.07 -2012.10)	None	F 002 H50 015	F 002 H50 047	None	None	
Alto 0.8i 12V	F 002 H50 045	None		None	F 002 H50 025	F 002 H50 076
Alto 0.8i 12V (P) 33 Kw (2000.09 -2006.01)	None	F 002 H50 015	F 002 H50 047	None	None	
Alto 0.8i 12V (P) 35 Kw (2006.02 -2012.10)	None	F 002 H50 015	F 002 H50 047	None	None	
Alto 1.0 CNG/LPG	F 002 H50 045	None		None	F 002 H50 025	F 002 H50 076
Alto 1.0 CNG/LPG (P+GAS) 50 Kw (2014.11 -2018.01)	None	F 002 H50 015	F 002 H50 047	None	None	
Alto 1.0i	F 002 H50 045	None		None	F 002 H50 025	F 002 H50 076
Alto 1.0i (P) 50 Kw (2010.08-->)	None	F 002 H50 015	F 002 H50 047	None	None	
Alto 1.1i 16V	None	None		None	None	F 002 H50 076
Alto 1.1i 16V (P) 47 Kw (2000.09 -2004.06)	F 002 H50 041	F 002 H50 011	F 002 H50 047	None	F 002 H50 021	
Alto 1.1i 16V (P) 47 Kw (2000.09 -2004.06)	F 002 H50 041	F 002 H50 011	F 002 H50 047	None	F 002 H50 025	
Alto 1.1i 16V (P) 47 Kw (2000.09 -2004.06)	F 002 H50 041	F 002 H50 015	F 002 H50 047	None	F 002 H50 021	
Alto 1.1i 16V (P) 47 Kw (2000.09 -2004.06)	F 002 H50 041	F 002 H50 015	F 002 H50 047	None	F 002 H50 025	
Alto 1.1i 16V (P) 47 Kw (2000.09 -2004.06)	F 002 H50 045	F 002 H50 011	F 002 H50 047	None	F 002 H50 021	
Alto 1.1i 16V (P) 47 Kw (2000.09 -2004.06)	F 002 H50 045	F 002 H50 011	F 002 H50 047	None	F 002 H50 025	
Alto 1.1i 16V (P) 47 Kw (2000.09 -2004.06)	F 002 H50 045	F 002 H50 015	F 002 H50 047	None	F 002 H50 021	
Alto 1.1i 16V (P) 47 Kw (2000.09 -2004.06)	F 002 H50 045	F 002 H50 015	F 002 H50 047	None	F 002 H50 025	
Alto 800	F 002 H50 045	None		None	None	F 002 H50 076
Alto 800 (P) 35 Kw (2012.10 -2019.03)	None	F 002 H50 015	F 002 H50 047	None	F 002 H50 025	
Alto 800 (P) 35 Kw (2019.04-->)	None	F 002 H50 015	F 002 H50 047	None	F 002 H50 025	
Alto 800 CNG	F 002 H50 045	None		None	F 002 H50 025	F 002 H50 076
Alto 800 CNG (P+GAS) 30 Kw (2012.10 -2019.03)	None	F 002 H50 015	F 002 H50 047	None	None	
BALENO BS6	None	None		None	F 002 H50 025	F 002 H50 076
BALENO BS6 (P) 62 Kw (2019.01-->)	None	F 002 H50 015	F 002 H50 047	None	None	
Baleno 1.2	F 002 H50 045	None		None	None	F 002 H50 076
Baleno 1.2 (D) 55 Kw (2015.10-->)	None	None		None	F 002 H50 070	
Baleno 1.2 (P) 62 Kw (2015.10-->)	None	F 002 H50 015	F 002 H50 047	None	F 002 H50 025	
Baleno 1.6i	F 002 H50 045	None		None	None	F 002 H50 076





## Passenger Cars

Model Description	S3	S4	S4+	T4	S5	S5+
Baleno 1.6i (P) 67 Kw (2005.10 -2007.04)	None	F 002 H50 011	F 002 H50 046	None	F 002 H50 021	
Baleno 1.6i (P) 69 Kw (1999.11 -2005.10)	None	F 002 H50 015	F 002 H50 047	None	F 002 H50 025	
Baleno Altura 1.6i	F 002 H50 045	None		None	F 002 H50 025	F 002 H50 076
Baleno Altura 1.6i (P) 69 Kw (2000.09 -2005.10)	None	F 002 H50 015	F 002 H50 047	None	None	
Baleno RS	None	None	F 002 H50 047	None	None	
Celerio 0.8 TD	F 002 H50 045	None		None	F 002 H50 025	F 002 H50 076
Celerio 0.8 TD (D) 35 Kw (2015.06-->)	None	F 002 H50 015	F 002 H50 047	None	None	
Celerio 1.0	F 002 H50 045	None		None	F 002 H50 025	F 002 H50 076
Celerio 1.0 (P) 50 Kw (2014.02-->)	None	F 002 H50 015	F 002 H50 047	None	None	
Celerio 1.0 VXi Green CNG	None	None	F 002 H50 047	None	F 002 H50 025	
Celerio X 1.0 2WD	None	None	F 002 H50 047	None	F 002 H50 025	
Ciaz 1.3 TD	None	None		None	F 002 H50 075	
Ciaz 1.4 Generation I	F 002 H50 045	None		None	F 002 H50 025	F 002 H50 076
Ciaz 1.4 Generation I (P) 68 Kw (2014.10 -2018.07)	None	F 002 H50 015	F 002 H50 047	None	None	
Ciaz BS IV Generation II	None	None	F 002 H50 047	None	F 002 H50 025	
DZIRE BS-VI	None	None		None	F 002 H50 025	F 002 H50 076
DZIRE BS-VI (P) 66 Kw (2020.03-->)	None	F 002 H50 015	F 002 H50 047	None	None	
DZIRE BS6	None	None		None	F 002 H50 025	F 002 H50 076
DZIRE BS6 (P) 66 Kw (2020.03-->)	None	F 002 H50 015	F 002 H50 047	None	None	
Dzire 1.2	F 002 H50 045	None		None	None	F 002 H50 076
Dzire 1.2 (D) 55 Kw (2017.05 -2020.03)	None	None		None	F 002 H50 070	
Dzire 1.2 (P) 61 Kw (2017.05 -2020.03)	None	F 002 H50 015	F 002 H50 047	None	F 002 H50 025	
Dzire Tour S CNG 1.2	None	None	F 002 H50 047	None	None	
Dzire Tour S CNG 1.2 (P+GAS) 62 Kw (2018.03-->)	None	F 002 H50 015		None	F 002 H50 025	
Eeco 1.2i	F 002 H50 045	None		None	F 002 H50 025	F 002 H50 076
Eeco 1.2i (P) 54 Kw (2010.01-->)	None	F 002 H50 015	F 002 H50 047	None	None	
Eeco 1.2i (P+GAS) 54 Kw (2010.08-->)	None	F 002 H50 015	F 002 H50 047	None	None	
Ertiga 1.3 TD Generation I	None	None		None	F 002 H50 075	
Ertiga 1.4 CNG Generation I	F 002 H50 045	None		None	F 002 H50 025	F 002 H50 076
Ertiga 1.4 CNG Generation I (P+GAS) 69 Kw (2013.06 -2018.11)	None	F 002 H50 015	F 002 H50 047	None	None	
Ertiga 1.4 Generation I	None	None		None	F 002 H50 075	
Ertiga 1.5 CNG Generation II	None	None		None	F 002 H50 025	F 002 H50 076
Ertiga 1.5 CNG Generation II (P+GAS) 68 Kw (2018.11-->)	None	F 002 H50 015	F 002 H50 047	None	None	
Esteem 1.3i	F 002 H50 041	F 002 H50 011		None	F 002 H50 021	

## Passenger Cars

Model Description	S3	S4	S4+	T4	S5	S5+
Esteem 1.5 Diesel	F 002 H50 041	F 002 H50 011		None	F 002 H50 021	
Esteem 1.5 Diesel (D) 42 Kw (2002.06 -2005.04)	F 002 H50 041	F 002 H50 011		None	None	
Gypsy 1.0 4WD	F 002 H50 041	F 002 H50 011		None	F 002 H50 021	
Gypsy 1.3 4WD	None	None		None	None	F 002 H50 076
Gypsy 1.3 4WD (P) 44 Kw (1996.11 -1999.12)	F 002 H50 041	F 002 H50 011	F 002 H50 047	None	F 002 H50 021	
Gypsy 1.3 4WD (P) 44 Kw (1996.11 -1999.12)	F 002 H50 041	F 002 H50 011	F 002 H50 047	None	F 002 H50 025	
Gypsy 1.3 4WD (P) 44 Kw (1996.11 -1999.12)	F 002 H50 041	F 002 H50 015	F 002 H50 047	None	F 002 H50 021	
Gypsy 1.3 4WD (P) 44 Kw (1996.11 -1999.12)	F 002 H50 041	F 002 H50 015	F 002 H50 047	None	F 002 H50 025	
Gypsy 1.3 4WD (P) 44 Kw (1996.11 -1999.12)	F 002 H50 045	F 002 H50 011	F 002 H50 047	None	F 002 H50 021	
Gypsy 1.3 4WD (P) 44 Kw (1996.11 -1999.12)	F 002 H50 045	F 002 H50 011	F 002 H50 047	None	F 002 H50 025	
Gypsy 1.3 4WD (P) 44 Kw (1996.11 -1999.12)	F 002 H50 045	F 002 H50 015	F 002 H50 047	None	F 002 H50 021	
Gypsy 1.3 4WD (P) 44 Kw (1996.11 -1999.12)	F 002 H50 045	F 002 H50 015	F 002 H50 047	None	F 002 H50 025	
Gypsy 1.3 4WD (P) 44 Kw (1996.11 -1999.12)	F 002 H50 045	F 002 H50 015	F 002 H50 047	None	F 002 H50 025	
Gypsy 1.3i 4WD	F 002 H50 041	F 002 H50 011		None	F 002 H50 021	
IGNIS	None	None		None	F 002 H50 025	F 002 H50 076
IGNIS (P) 61 Kw (2020.02-->)	None	F 002 H50 015	F 002 H50 047	None	None	
Ignis 1.2	F 002 H50 045	None		None	F 002 H50 025	F 002 H50 076
Ignis 1.2 (P) 61 Kw (2017.01-->)	None	F 002 H50 015	F 002 H50 047	None	None	
Ignis 1.3 TD	None	None		None	F 002 H50 070	
Omni 0.8 Generation I	F 002 H50 041	F 002 H50 011		None	F 002 H50 021	
Omni 0.8 Generation I (P) 27 Kw (1984.12 -1999.11)	None	F 002 H50 011	F 002 H50 046	None	None	
Omni 0.8 Generation II	F 002 H50 041	F 002 H50 011	F 002 H50 046	None	F 002 H50 021	
Omni 0.8 LPG Generation II	F 002 H50 041	F 002 H50 011		None	F 002 H50 021	
Ritz 1.2 Generation I	F 002 H50 041	F 002 H50 011		None	None	
Ritz 1.2 Generation I (D) 55 Kw (2009.05 -2012.07)	None	None		None	F 002 H50 075	
Ritz 1.2 Generation I (P) 63 Kw (2009.05 -2012.07)	None	None		None	F 002 H50 021	
S-Presso 1.0	None	None	F 002 H50 047	None	None	
S-Presso 1.0 (P) (2019.10-->)	None	F 002 H50 015		None	F 002 H50 025	
S-cross 1.2	None	None		None	F 002 H50 070	
S-cross 1.6 TD 2WD	None	None		None	F 002 H50 075	
SX4 1.3D	None	None		None	F 002 H50 075	
SX4 1.6i	None	None		None	None	F 002 H50 076
SX4 1.6i (P) 76 Kw (2007.05 -2009.10)	F 002 H50 041	F 002 H50 011		None	F 002 H50 021	
SX4 1.6i (P) 77 Kw (2009.10 -2014.08)	F 002 H50 045	F 002 H50 015	F 002 H50 047	None	F 002 H50 025	
SX4 1.6i (P+GAS) 64 Kw (2010.08 -2014.08)	F 002 H50 041	F 002 H50 011		None	F 002 H50 021	
Swift 1.2	F 002 H50 041	F 002 H50 011		None	F 002 H50 021	
Swift 1.2i	F 002 H50 041	F 002 H50 011		None	F 002 H50 021	



## Passenger Cars

Model Description	S3	S4	S4+	T4	S5	S5+
Swift 1.2i Dzire	F 002 H50 041	F 002 H50 011		None	F 002 H50 021	
Swift 1.3 Dzire TD	F 002 H50 044	None		None	F 002 H50 075	
Swift 1.3 Dzire TD (D) 56 Kw (2008.03 -2012.02)	None	F 002 H50 064	F 002 H50 048	None	None	
Swift 1.3 TD	None	None		None	F 002 H50 075	
Swift 1.3i	F 002 H50 041	F 002 H50 011		None	F 002 H50 021	
Swift 1.3i Dzire	None	None		None	F 002 H50 075	
Swift BS IV	None	None	F 002 H50 047	None	None	
Swift BS IV (D) 56 Kw (2018.01-->)	None	None		None	F 002 H50 070	
Swift BS IV (P) 61 Kw (2018.01-->)	None	None		None	F 002 H50 025	
Tour S 1.2	None	None	F 002 H50 047	None	None	
Tour S 1.2 (D) 55 Kw (2017.07-->)	None	None		None	F 002 H50 070	
Tour S 1.2 (P) 61 Kw (2017.07-->)	None	F 002 H50 015		None	F 002 H50 025	
VITARA BREEZA BS6	None	None		None	F 002 H50 025	F 002 H50 076
VITARA BREEZA BS6 (P) 77 Kw (2020.03-->)	None	F 002 H50 015	F 002 H50 047	None	None	
Vitara Breeza BS-VI	None	None		None	F 002 H50 025	F 002 H50 076
Vitara Breeza BS-VI (P+GAS) 77 Kw (2019.09-->)	None	F 002 H50 015	F 002 H50 047	None	None	
Vitara Brezza 1.2	None	None		None	F 002 H50 070	
Wagon R 1.0	F 002 H50 045	None		None	F 002 H50 025	F 002 H50 076
Wagon R 1.0 (P) 50 Kw (2010.04 -2018.12)	None	F 002 H50 015	F 002 H50 047	None	None	
Wagon R 1.0 (P+GAS) 43 Kw (2010.08 -2018.12)	None	F 002 H50 015	F 002 H50 047	None	None	
Wagon R 1.0 (P+GAS) 43 Kw (2019.03-->)	None	F 002 H50 015	F 002 H50 047	None	None	
Wagon R 1.0i LPG	F 002 H50 045	None		None	F 002 H50 025	F 002 H50 076
Wagon R 1.0i LPG (P+GAS) 46 Kw (2011.02 -2015.06)	None	F 002 H50 015	F 002 H50 047	None	None	
Wagon R 1.1i 16V	F 002 H50 045	None		None	F 002 H50 025	F 002 H50 076
Wagon R 1.1i 16V (P) 43 Kw (2000.01 -2010.04)	None	F 002 H50 015	F 002 H50 047	None	None	
Wagon R 1.1i 16V (P) 47 Kw (2004.04 -2010.04)	None	F 002 H50 015	F 002 H50 047	None	None	
Wagon R 1.1i 16V (P+GAS) 43 Kw (2006.07 -2011.02)	None	F 002 H50 015	F 002 H50 047	None	None	
Wagon R 1.2	None	None	F 002 H50 047	None	None	
Wagon R 1.2 (P) 61 Kw (2019.01-->)	None	F 002 H50 015		None	F 002 H50 025	
Wagon R Stingray 1.0	None	None		None	F 002 H50 025	F 002 H50 076
Wagon R Stingray 1.0 (P) 50 Kw (2013.08 -2017.12)	None	F 002 H50 015	F 002 H50 047	None	None	
Zen 1.0i	F 002 H50 041	F 002 H50 011		None	F 002 H50 021	
Zen 1.0i 16V	F 002 H50 041	F 002 H50 011		None	F 002 H50 021	
Zen 1.0i Estilo	F 002 H50 045	None		None	F 002 H50 025	F 002 H50 076
Zen 1.0i Estilo (P) 50 Kw (2009.08 -2014.01)	None	F 002 H50 015	F 002 H50 047	None	None	
Zen 1.0i Estilo CNG	F 002 H50 045	None		None	F 002 H50 025	F 002 H50 076

## Passenger Cars

Model Description	S3	S4	S4+	T4	S5	S5+
Zen 1.0i Estilo CNG (P+GAS) 50 Kw (2010.08 -2014.01)	None	F 002 H50 015	F 002 H50 047	None	None	
Zen 1.1 Estilo	F 002 H50 045	None		None	F 002 H50 025	F 002 H50 076
Zen 1.1 Estilo (P) 47 Kw (2006.12-->)	None	F 002 H50 015	F 002 H50 047	None	None	
Zen 1.5 Diesel	F 002 H50 041	F 002 H50 011		None	F 002 H50 021	
<b>MERCEDES-BENZ</b>						
C-Klasse [203]	None	None		None	F 002 H50 018	
E-Klasse [211]	None	None		None	F 002 H50 018	
E-Klasse [212]	None	None		None	F 002 H50 016	
<b>MG</b>						
Hector 1.5	None	None		None	F 002 H50 072	
Hector 2.0 TD	None	None		None	F 002 H50 072	
Hector BS6	None	None		None	F 002 H50 072	
Hector Plus BS6	None	None		None	F 002 H50 072	
<b>MITSUBISHI</b>						
Lancer 1.5i	F 002 H50 045	None		None	F 002 H50 025	F 002 H50 076
Lancer 1.5i (P) 64 Kw (1988.09 -2010.09)	None	F 002 H50 015	F 002 H50 047	None	None	
Lancer 1.8i Invex	F 002 H50 045	None		None	F 002 H50 025	F 002 H50 076
Lancer 1.8i Invex (P) 90 Kw (2004.03 -2005.08)	None	F 002 H50 015	F 002 H50 047	None	None	
Lancer Cedia 2.0i	F 002 H50 045	None		None	F 002 H50 025	F 002 H50 076
Lancer Cedia 2.0i (P+GAS) 85 Kw (2006.01-->)	None	F 002 H50 015	F 002 H50 047	None	None	
Lancer Hatchback [C6/C7]	None	None		None	F 002 H50 405	
<b>NISSAN</b>						
Micra 1.2 i	F 002 H50 045	F 002 H50 015		None	F 002 H50 025	F 002 H50 076
Micra [K13K] (D) 47 Kw (2010.11-->)	None	F 002 H50 015		None	None	
Micra [K13K] (P) 59 Kw (2010.05 -2015.10)	None	F 002 H50 015	F 002 H50 047	None	None	
Sunny 1.5D	None	None		None	F 002 H50 028	
Sunny 1.5i	None	None		None	F 002 H50 025	F 002 H50 076
Terrano 1.5 D	None	None		None	F 002 H50 028	
Terrano 1.6	None	None		None	F 002 H50 028	
X-Trail [T31]	None	F 002 H50 065		None	None	
<b>OPEL</b>						
Astra 1.6	None	None		None	F 002 H50 016	
Astra F [T92] (D) 50 Kw (1994.09 -1998.02)	None	None		None	F 002 H50 016	
Astra F [T92] (P) 55 Kw (1994.09 -1998.02)	None	None		None	F 002 H50 027	
Astra F [T92] (P) 55 Kw (1997.09 -1998.02)	None	None		None	F 002 H50 027	
Corsa 1.4i	None	None		None	F 002 H50 027	
Corsa 1.4i Sail Hatchback	None	None		None	F 002 H50 027	
Corsa 1.4i Swing Hatchback	None	None		None	F 002 H50 027	
Corsa 1.6i	None	None		None	F 002 H50 027	





## Passenger Cars

Model Description	S3	S4	S4+	T4	S5	S5+
Corsa 1.6i Sail Hatchback	None	None		None	F 002 H50 027	
Corsa 1.6i Swing 8V Stationwagon	None	None		None	F 002 H50 027	
Vectra C [Z02]	None	None		None	F 002 H50 028	
<b>PREMIER</b>						
Padmini 1.1	None	None		None	F 002 H50 026	
<b>RENAULT</b>						
Duster 1.5	None	None		None	F 002 H50 028	
Duster 1.5 TD	None	None		None	F 002 H50 028	
Duster 1.6	None	None		None	F 002 H50 028	
Duster [HS]	None	None		None	F 002 H50 028	
Duster dCi	None	None		None	F 002 H50 028	
Fluence [L3]	None	None		None	F 002 H50 028	
Kwid 0.8	None	None		None	F 002 H50 038	
Kwid 1.0	None	None		None	F 002 H50 038	
Laguna III [BT]	None	None		None	F 002 H50 028	
Lodgy 1.5 dCi	None	None		None	F 002 H50 028	
Logan [KS/FS] MCV	None	None		None	F 002 H50 028	
Pulse 1.2i	F 002 H50 045	None	F 002 H50 047	None	F 002 H50 025	F 002 H50 076
Pulse 1.2i (P) 56 Kw (2012.05-->)	None	F 002 H50 015	F 002 H50 047	None	None	
Scala 1.5D	None	None		None	F 002 H50 028	
Scala 1.5i	F 002 H50 045	None	F 002 H50 047	None	F 002 H50 025	F 002 H50 076
Scala 1.5i (P) 73 Kw (2012.09-->)	None	F 002 H50 015	F 002 H50 047	None	None	
TRIBER	None	None	F 002 H50 047	None	None	
TRIBER (P) 53 Kw (2019.07-->)	None	F 002 H50 015		None	F 002 H50 025	
<b>SKODA</b>						
Fabia [5J2, 542]	None	None		None	F 002 H50 016	
Laura	None	None		None	F 002 H50 016	
Laura 1.9 TDI	None	None		None	F 002 H50 016	
Laura 1.9 TDI	None	None		None	F 002 H50 028	
Laura 2.0 TDI	None	None		None	F 002 H50 016	
Octavia [1U2] (D) 66 Kw (2001.11 -2009.12)	None	None		None	F 002 H50 016	
Octavia [1U2] (P) 110 Kw (1998.03 -2010.12)	None	None		None	F 002 H50 028	
Octavia [5E3]	None	None		None	F 002 H50 016	
Rapid 1.5 TD	None	None		None	F 002 H50 028	
Superb 2.5 TDI	None	None		None	F 002 H50 016	
Superb [3T4]	None	None		None	F 002 H50 016	
Superb [3U4]	None	None		None	F 002 H50 016	
Yeti [5L7]	None	None		None	F 002 H50 016	
<b>SUZUKI</b>						
Baleno 1.2	F 002 H50 045	None		None	F 002 H50 025	F 002 H50 076
Baleno 1.2 (P) 62 Kw (2015.10-->)	None	F 002 H50 015	F 002 H50 047	None	None	
Baleno 1.3 TD	None	None		None	F 002 H50 070	
Grand Vitara	F 002 H50 041	None		None	F 002 H50 021	
Grand Vitara (P) 103 Kw (2007.07-->)	None	F 002 H50 011	F 002 H50 046	None	None	

## Passenger Cars

Model Description	S3	S4	S4+	T4	S5	S5+
Grand Vitara (P) 128 Kw (2003.07 -2005.11)	None	F 002 H50 011	F 002 H50 046	None	None	
S-Cross 1.3 TD	None	None		None	F 002 H50 070	
S-Cross 1.6 TD	None	None		None	F 002 H50 075	
<b>TATA MOTORS</b>						
1.4TD eV2	None	None		None	F 002 H50 027	
207 DI 3.0 Diesel	None	None		F 002 H50 008	None	
207 DI Crew Cab	None	None		F 002 H50 008	None	
207 DI EX	None	None		F 002 H50 008	None	
Aria 2.2D	None	None		None	F 002 H50 033	
Aria 2.2D 4WD	None	None		None	F 002 H50 033	
Bolt 1.2 T	None	None		None	F 002 H50 070	
Bolt 1.2 TD	None	None		None	F 002 H50 027	
HARRIER	None	None		None	F 002 H50 016	
HEXA VARICOR 400	F 002 H50 045	None		None	F 002 H50 025	F 002 H50 076
HEXA VARICOR 400 (D) 115 Kw (2017.01-->)	F 002 H50 044	F 002 H50 015	F 002 H50 047	None	None	
HEXA VARICOR 400 4X4	None	None		F 002 H50 008	None	
Indica 1.2i 8V	None	None		None	F 002 H50 026	
Indica 1.4 Diesel	None	F 002 H50 064		None	F 002 H50 021	
Indica 1.4 Diesel (D) 39 Kw (1998.12 -2012.06)	F 002 H50 041	F 002 H50 011	F 002 H50 046	None	None	
Indica 1.4 Diesel (D) 39 Kw (1998.12 -2012.06)	F 002 H50 041	F 002 H50 011	F 002 H50 048	None	None	
Indica 1.4 Diesel (D) 39 Kw (1998.12 -2012.06)	F 002 H50 041	F 002 H50 064	F 002 H50 046	None	None	
Indica 1.4 Diesel (D) 39 Kw (1998.12 -2012.06)	F 002 H50 041	F 002 H50 064	F 002 H50 048	None	None	
Indica 1.4 Diesel (D) 39 Kw (1998.12 -2012.06)	F 002 H50 041	F 002 H50 064	F 002 H50 048	None	None	
Indica 1.4 Diesel (D) 39 Kw (1998.12 -2012.06)	F 002 H50 041	F 002 H50 064	F 002 H50 048	None	None	
Indica 1.4 Diesel 8V	F 002 H50 044	None		None	None	
Indica 1.4 Diesel 8V (D) 50 Kw (2008.05 -2010.01)	F 002 H50 044	F 002 H50 011	F 002 H50 048	None	None	
Indica 1.4 Diesel 8V (D) 50 Kw (2008.05 -2010.01)	F 002 H50 044	F 002 H50 064	F 002 H50 048	None	None	
Indica 1.4 Turbodiesel	F 002 H50 044	None		None	None	
Indica 1.4 Turbodiesel (D) 50 Kw (2005.10 -2010.01)	F 002 H50 044	F 002 H50 011	F 002 H50 048	None	None	
Indica 1.4 Turbodiesel (D) 50 Kw (2005.10 -2010.01)	F 002 H50 044	F 002 H50 064	F 002 H50 048	None	None	
Indica 1.4i	F 002 H50 041	None		None	None	





## Passenger Cars

Model Description	S3	S4	S4+	T4	S5	S5+
Indica 1.4i (P) 44 Kw (1998.12 -2000.04)	F 002 H50 041	F 002 H50 011	F 002 H50 046	None	F 002 H50 021	
Indica 1.4i (P) 55 Kw (2000.05 -2010.01)	None	None		None	F 002 H50 026	
Indica 1.4i (P) 55 Kw (2001.07 -2008.05)	None	None		None	F 002 H50 026	
Indica Vista 1.2D	F 002 H50 044	None		None	None	
Indica Vista 1.2D (D) 55 Kw (2008.08 -2011.10)	None	F 002 H50 064	F 002 H50 048	None	None	
Indica Vista 1.2i 8V	None	None		None	F 002 H50 026	
Indica Vista 1.3 TD	None	None		None	F 002 H50 028	
Indica Vista 1.4 Diesel 8V	F 002 H50 044	None		None	None	
Indica Vista 1.4 Diesel 8V (D) 52 Kw (2008.08 -2013.07)	None	F 002 H50 064	F 002 H50 048	None	None	
Indica Vista 1.4i	None	None		None	F 002 H50 026	
Indigo 1.2i	None	None		None	F 002 H50 026	
Indigo 1.2i CS	None	None		None	F 002 H50 026	
Indigo 1.2i eCS	None	None		None	F 002 H50 026	
Indigo 1.4 Turbodiesel	F 002 H50 044	None		None	F 002 H50 021	
Indigo 1.4 Turbodiesel (D) 46 Kw (2002.12 -2005.05)	F 002 H50 041	F 002 H50 011	F 002 H50 046	None	None	
Indigo 1.4 Turbodiesel (D) 46 Kw (2002.12 -2005.05)	F 002 H50 041	F 002 H50 011	F 002 H50 048	None	None	
Indigo 1.4 Turbodiesel (D) 46 Kw (2002.12 -2005.05)	F 002 H50 041	F 002 H50 064	F 002 H50 046	None	None	
Indigo 1.4 Turbodiesel (D) 46 Kw (2002.12 -2005.05)	F 002 H50 041	F 002 H50 064	F 002 H50 048	None	None	
Indigo 1.4 Turbodiesel (D) 46 Kw (2002.12 -2005.05)	F 002 H50 044	F 002 H50 011	F 002 H50 046	None	None	
Indigo 1.4 Turbodiesel (D) 46 Kw (2002.12 -2005.05)	F 002 H50 044	F 002 H50 011	F 002 H50 048	None	None	
Indigo 1.4 Turbodiesel (D) 46 Kw (2002.12 -2005.05)	F 002 H50 044	F 002 H50 064	F 002 H50 046	None	None	
Indigo 1.4 Turbodiesel (D) 46 Kw (2002.12 -2005.05)	F 002 H50 044	F 002 H50 064	F 002 H50 048	None	None	
Indigo 1.4D	F 002 H50 044	F 002 H50 011		None	None	
Indigo 1.4D (D) 51 Kw (2005.06 -2009.10)	None	F 002 H50 064	F 002 H50 048	None	None	
Indigo 1.4D (D) 51 Kw (2007.02 -2009.10)	None	F 002 H50 064	F 002 H50 048	None	None	
Indigo 1.4D CS	F 002 H50 044	None		None	None	
Indigo 1.4D CS (D) 51 Kw (2008.03 -2011.09)	F 002 H50 044	F 002 H50 011	F 002 H50 048	None	None	
Indigo 1.4D CS (D) 51 Kw (2008.03 -2011.09)	F 002 H50 044	F 002 H50 064	F 002 H50 048	None	None	
Indigo 1.4D CS (D) 51 Kw (2008.05 -2009.10)	None	F 002 H50 011	F 002 H50 046	None	None	
Indigo 1.4D CS (D) 51 Kw (2008.05 -2009.10)	None	F 002 H50 011	F 002 H50 048	None	None	
Indigo 1.4D CS (D) 51 Kw (2008.05 -2009.10)	None	F 002 H50 064	F 002 H50 046	None	None	

## Passenger Cars

Model Description	S3	S4	S4+	T4	S5	S5+
Indigo 1.4D CS (D) 51 Kw (2008.05 -2009.10)	None	F 002 H50 064	F 002 H50 048	None	None	
Indigo 1.4D eCS	F 002 H50 044	None		None	None	
Indigo 1.4D eCS (D) 51 Kw (2011.09 -2015.01)	None	F 002 H50 064	F 002 H50 048	None	None	
Indigo 1.4i	F 002 H50 041	None		None	F 002 H50 021	
Indigo 1.4i (D) 51 Kw (2007.02 -2011.01)	None	F 002 H50 011	F 002 H50 046	None	None	
Indigo 1.4i (P) 63 Kw (2006.09 -2009.10)	None	F 002 H50 011	F 002 H50 046	None	None	
Indigo 1.4i eCS	None	None		None	F 002 H50 026	
Indigo Manza 1.2 TD	F 002 H50 044	None		None	None	
Indigo Manza 1.2 TD (D) 66 Kw (2009.10 -2017.06)	None	F 002 H50 064	F 002 H50 048	None	None	
Indigo Manza 1.4i	None	None		None	F 002 H50 026	
Indigo Marina 1.4 Diesel 16V	F 002 H50 044	F 002 H50 064		None	None	
Indigo Marina 1.4 Diesel 16V (D) 51 Kw (2007.02 -2010.03)	None	F 002 H50 064	F 002 H50 048	None	None	
Indigo Marina 1.4TD	F 002 H50 044	None		None	F 002 H50 021	
Indigo Marina 1.4TD (D) 46 Kw (2004.09 -2005.05)	F 002 H50 041	F 002 H50 011	F 002 H50 046	None	None	
Indigo Marina 1.4TD (D) 46 Kw (2004.09 -2005.05)	F 002 H50 041	F 002 H50 011	F 002 H50 048	None	None	
Indigo Marina 1.4TD (D) 46 Kw (2004.09 -2005.05)	F 002 H50 041	F 002 H50 064	F 002 H50 046	None	None	
Indigo Marina 1.4TD (D) 46 Kw (2004.09 -2005.05)	F 002 H50 041	F 002 H50 064	F 002 H50 048	None	None	
Indigo Marina 1.4TD (D) 46 Kw (2004.09 -2005.05)	F 002 H50 044	F 002 H50 011	F 002 H50 046	None	None	
Indigo Marina 1.4TD (D) 46 Kw (2004.09 -2005.05)	F 002 H50 044	F 002 H50 011	F 002 H50 048	None	None	
Indigo Marina 1.4TD (D) 46 Kw (2004.09 -2005.05)	F 002 H50 044	F 002 H50 064	F 002 H50 046	None	None	
Indigo Marina 1.4TD (D) 46 Kw (2004.09 -2005.05)	F 002 H50 044	F 002 H50 064	F 002 H50 048	None	None	
Indigo Marina 1.4TD (D) 51 Kw (2005.06 -2010.03)	F 002 H50 044	F 002 H50 064	F 002 H50 048	None	None	
Indigo Marina 1.4i	F 002 H50 041	None		None	F 002 H50 021	
Indigo Marina 1.4i (P) 63 Kw (2006.09 -2010.03)	None	F 002 H50 011	F 002 H50 046	None	None	
Movus 2.2TD	None	None		F 002 H50 008	None	
Nano 0.6	F 002 H50 041	F 002 H50 011		None	None	
Nano 0.6i	F 002 H50 041	F 002 H50 011		None	None	
Nano 0.6i CNG	F 002 H50 041	None		None	None	
Nexon 1.2	None	None		None	F 002 H50 070	
Nexon 1.5	None	None		None	F 002 H50 027	
Safari 2.0 Turbodiesel	None	None		F 002 H50 008	F 002 H50 021	







## Passenger Cars

Model Description	S3	S4	S4+	T4	S5	S5+
Safari 2.0 Turbodiesel 4x4	F 002 H50 041	None		None	F 002 H50 021	
Safari 2.0 Turbodiesel 4x4 (D) 66 Kw (1998.02-2007.09)	None	F 002 H50 011	F 002 H50 046	None	None	
Safari 2.2	None	None		F 002 H50 008	None	
Safari 2.2 Diesel 4WD	None	None		F 002 H50 008	None	
Safari 2.2 Diesel P5	None	None		None	F 002 H50 033	
Safari 3.0D 4x4 Dicor	F 002 H50 041	None		None	F 002 H50 021	
Safari 3.0D 4x4 Dicor (D) 85 Kw (2005.08-2007.09)	None	F 002 H50 011	F 002 H50 046	None	None	
Safari 4x2 Dicor	F 002 H50 041	None		None	F 002 H50 021	
Safari 4x2 Dicor (D) 85 Kw (2005.08-2008.12)	None	F 002 H50 011	F 002 H50 046	None	None	
Safari Storme 2.2D	None	None		F 002 H50 008	None	
Safari Storme 2.2D 4x4	None	None		F 002 H50 008	None	
Sierra 1.9 Diesel	F 002 H50 041	None		None	F 002 H50 021	
Sierra 1.9 Diesel (D) 44 Kw (1989.11-1998.06)	None	F 002 H50 011	F 002 H50 046	None	None	
Sierra 1.9 Turbodiesel	F 002 H50 041	None		None	F 002 H50 021	
Sierra 1.9 Turbodiesel (D) 66 Kw (1997.06-2002.05)	None	F 002 H50 011	F 002 H50 046	None	None	
Sierra 1.9 Turbodiesel 4WD	F 002 H50 041	None		None	F 002 H50 021	
Sierra 1.9 Turbodiesel 4WD (D) 66 Kw (2001.06-2002.07)	None	F 002 H50 011	F 002 H50 046	None	None	
Sumo 1.9 Diesel	F 002 H50 041	None		None	F 002 H50 021	
Sumo 1.9 Diesel (D) 50 Kw (1994.05-->)	None	F 002 H50 011	F 002 H50 046	None	None	
Sumo 1.9 Turbodiesel	F 002 H50 041	None		None	F 002 H50 021	
Sumo 1.9 Turbodiesel (D) 66 Kw (2000.04-2010.04)	F 002 H50 041	F 002 H50 011	F 002 H50 046	F 002 H50 008	None	
Sumo 1.9 Turbodiesel 4x4	F 002 H50 041	F 002 H50 011		None	F 002 H50 021	
Sumo 1.9 Turbodiesel 4x4 (D) 66 Kw (1998.01-->)	None	F 002 H50 011	F 002 H50 046	None	None	
Sumo 1.9D Grande	F 002 H50 041	None	F 002 H50 046	None	F 002 H50 021	
Sumo 1.9D Grande (D) 66 Kw (2009.04-->)	None	F 002 H50 011	F 002 H50 046	None	None	
Sumo 2.2D Grande	None	None		F 002 H50 008	None	
Sumo 3.0 Diesel BS2 Spacio	F 002 H50 041	F 002 H50 011		None	F 002 H50 021	
Sumo 3.0 Diesel BS2 Spacio (D) 48 Kw (2000.02-->)	None	F 002 H50 011	F 002 H50 046	None	None	
Sumo 3.0D Spacio	F 002 H50 041	F 002 H50 011		None	F 002 H50 021	
Sumo 3.0D Spacio (D) 48 Kw (2000.02-2004.10)	None	F 002 H50 011	F 002 H50 046	None	None	
Sumo Gold 3.0 BS III	None	None		F 002 H50 008	None	
Sumo Gold 3.0 d	None	None		F 002 H50 008	None	
Sumo Spacio 3.0 P5	F 002 H50 045	None		None	F 002 H50 025	F 002 H50 076
Sumo Spacio 3.0 P5 (D) 48 Kw (2005.01-2011.11)	None	F 002 H50 015	F 002 H50 046	None	None	

## Passenger Cars

Model Description	S3	S4	S4+	T4	S5	S5+
Sumo Spacio 3.0 P5 (D) 48 Kw (2005.01-2011.11)	None	F 002 H50 015	F 002 H50 047	None	None	
TIGOR 1.0	None	None		None	F 002 H50 070	
TIGOR 1.2	None	None		None	F 002 H50 070	
Tiago 1.0 BS IV Multi Drive	None	None		None	F 002 H50 027	
Tiago 1.2 MPFi Multi Drive	None	None		None	F 002 H50 070	
Winger 1.9 Diesel	None	None		None	F 002 H50 033	
ZEST 1.2 T	None	None		None	F 002 H50 070	
ZEST 1.2 TD	None	None		None	F 002 H50 027	
ZEST 1.24 TD XTA	None	None		None	F 002 H50 027	
<b>TOYOTA</b>						
Corolla 1.8i	F 002 H50 045	None	F 002 H50 047	None	F 002 H50 025	F 002 H50 076
Corolla 1.8i (P) 92 Kw (2003.01-2008.08)	None	F 002 H50 015	F 002 H50 047	None	None	
Corolla Altis 1.4TD	None	None		None	F 002 H50 073	
Corolla Altis 1.8	F 002 H50 045	None		None	F 002 H50 025	F 002 H50 076
Corolla Altis 1.8 (P) 103 Kw (2013.06-->)	None	F 002 H50 015	F 002 H50 047	None	None	
Corolla Altis 1.8 i	F 002 H50 045	None		None	F 002 H50 025	F 002 H50 076
Corolla Altis 1.8 i (P) 103 Kw (2011.06-2013.03)	None	F 002 H50 015	F 002 H50 047	None	None	
Corolla Altis 1.8i	F 002 H50 045	None		None	F 002 H50 025	F 002 H50 076
Corolla Altis 1.8i (P+GAS) 97 Kw (2010.02-2011.06)	None	F 002 H50 015	F 002 H50 047	None	None	
Corolla [E15]	None	F 002 H50 015		None	None	
Etios 1.2i Liva	F 002 H50 045	None		None	F 002 H50 025	F 002 H50 076
Etios 1.2i Liva (P) 59 Kw (2011.06-->)	None	F 002 H50 015	F 002 H50 047	None	None	
Etios 1.4D	None	None		None	F 002 H50 072	
Etios 1.4D Liva	None	None		None	F 002 H50 072	
Etios 1.5i	F 002 H50 045	None		None	F 002 H50 025	F 002 H50 076
Etios 1.5i (P) 66 Kw (2010.12-->)	None	F 002 H50 015	F 002 H50 047	None	None	
Etios Cross 1.4TD	None	None		None	F 002 H50 032	
Fortuner 2.8 TD (D) 130 Kw (2016.11-->)	None	None		None	F 002 H50 033	
Fortuner 2.8 TD (D) 130 Kw (2016.11-->)	None	None		None	F 002 H50 075	
Fortuner 2.8 TD 4X4	None	None		None	F 002 H50 075	
Fortuner 2.8 TD 4x4	None	None		None	F 002 H50 033	
Fortuner 3.0 Diesel Turbo	None	None		None	F 002 H50 033	
Fortuner [N5,N6]	None	None		None	F 002 H50 033	
Glanza 1.2	None	None	F 002 H50 047	None	None	
Glanza 1.2 (P) 66 Kw (2019.06-->)	None	F 002 H50 015		None	F 002 H50 025	
INNOVA CRYSTA BS6	None	None		None	F 002 H50 075	
Innova 2.0	F 002 H50 045	None		None	F 002 H50 025	F 002 H50 076
Innova 2.0 (P) 126 Kw (2009.01-2015.01)	None	F 002 H50 015	F 002 H50 047	None	None	
Innova 2.0 CNG	F 002 H50 045	None		None	F 002 H50 025	F 002 H50 076



## Passenger Cars

Model Description	S3	S4	S4+	T4	S5	S5+
Innova 2.0 CNG (P+GAS) 100 Kw (2009.02 -2013.05)	None	F 002 H50 015	F 002 H50 047	None	None	
Innova 2.0i	F 002 H50 045	None	F 002 H50 047	None	F 002 H50 025	F 002 H50 076
Innova 2.0i (P) 100 Kw (2004.12 -2009.01)	None	F 002 H50 015	F 002 H50 047	None	None	
Innova 2.4 Touring Sport (D) 110 Kw (2017.05-->)	None	F 002 H50 065	F 002 H50 049	None	None	
Innova 2.5 CRDi	None	None	F 002 H50 049	None	None	
Innova 2.8 Touring Sport (D) 128 Kw (2017.05-->)	None	F 002 H50 065	F 002 H50 049	None	None	
Innova Crysta 2.4TD BS-IV	None	None		None	F 002 H50 016	
Innova Crysta 2.8 TD	None	None		None	F 002 H50 016	
New Corolla Altis 1.8i	F 002 H50 045	None		None	F 002 H50 025	F 002 H50 076
New Corolla Altis 1.8i (P) 97 Kw (2008.09 -2011.06)	None	F 002 H50 015	F 002 H50 047	None	None	
Qualis 2.4 Diesel	None	F 002 H50 065		None	None	
Urban Cruiser	None	None		None	F 002 H50 025	F 002 H50 076
Urban Cruiser (P) 78.3 Kw (2020.09-->)	None	F 002 H50 015	F 002 H50 047	None	None	
Yaris	None	None		None	F 002 H50 025	
<b>VOLKSWAGEN</b>						
Ameo 1.0	None	None		None	F 002 H50 026	
Ameo 1.2	None	None		None	F 002 H50 026	
Ameo 1.5TDi	None	None		None	F 002 H50 028	
Ameo BS-VI	None	None		None	F 002 H50 028	
Cross Polo 1.2	None	None		None	F 002 H50 026	
Jetta 1.9TDI	None	None		None	F 002 H50 016	
Jetta 2.0D	None	None		None	F 002 H50 028	
Jetta [162]	None	None		None	F 002 H50 016	
Jetta [9M2]	None	None		None	F 002 H50 016	
New Beetle [1C1, 9C1]	None	None		None	F 002 H50 016	
POLO	None	None		None	F 002 H50 026	
POLO	None	None		None	F 002 H50 028	
POLO BS-VI	None	None		None	F 002 H50 028	
Passat [362]	None	None		None	F 002 H50 016	
Passat [3C2]	None	None		None	F 002 H50 016	
Polo 1.0	None	None		None	F 002 H50 026	
Polo 1.2D	None	None		None	F 002 H50 028	
Polo 1.5 TD	None	None		None	F 002 H50 028	
Polo 1.5 TDI	None	None		None	F 002 H50 028	
Polo 1.6	None	None		None	F 002 H50 028	
Polo [6R1]	None	None		None	F 002 H50 028	
TIGUAN BS-VI 4WD	None	None		None	F 002 H50 016	
Vento 1.2	None	None		None	F 002 H50 028	
Vento 1.5 TD	None	None		None	F 002 H50 028	
Vento 1.5 TDI HIGHLINE	None	None		None	F 002 H50 028	
Vento 1.5 TDi	None	None		None	F 002 H50 028	
Vento 1.6 D	None	None		None	F 002 H50 028	
Vento 1.6 i	None	None		None	F 002 H50 028	

## Commercial Vehicles and Off-highway

Vehicle Model	Bosch Battery Range		
	S3	S4/T4	S5
<b>ASHOK LEYLAND</b>			
1616 iL / 2214 6x2 (H) / Boss 1113 LX	None	F 002 H50 008	None
Viking / Lynx / Viking 180HP ROTARY FIP EDC BS3 / 3718 BS IV / Viking BS IV CNG / 1618 BS IV / 2518 T BS IV / Captain 2518 BS IV / 3116 / 2516 il / 2523	None	F 002 H50 009	None
U 3718 BS IV / U 4923 / 2516 6x2 (H) / 3118 BS IV / 3718 iL / 3518	None	F 002 H50 012	None
Ecomet 1112 BS III / Ecomet 1212 BS IV / Ecomet 1112 BS IV / Ecomet 1012 Smart	None	F 002 H50 013	None
Dost 1.5TD Xpress (D) 43 Kw (2013.07-->) / Dost 1.5D (D) 40 Kw (2011.09-->)	None	F 002 H50 064	None
Dost 1.5 CNG / Dost 1.5D / Dost 1.5TD Plus	F 002 H50 044		None
<b>BHARATBENZ</b>			
2528C	None	F 002 H50 009	None
<b>EICHER</b>			
10.59 Turbo / 10.90 / 11.12 / 10.90 E2 Plus / 11.10 E2 Plus	None	F 002 H50 008	None
<b>EICHER MOTORS LIMITED</b>			
Starline 10.50 C/D / Starline 110.50 XS E	None	F 002 H50 008	None
Pro 1110 BS III / Pro 1110 BS IV	None	F 002 H50 013	None
<b>FORCE MOTORS</b>			
Traveller 3050 mm WB 2.6 Diesel / Traveller 3350/3700 mm WB 2.6 Diesel	None	F 002 H50 007	None
Tempo Traveller Ambulance 2.4 Diesel / Tempo Traveller Delivery Van LWB 2.4 Diesel / Traveller Ambulance LWB 2.6 Diesel / Tempo Traveller Rear Dual Wheels 3700 2.6 Diesel / Pick Up Trax Dual Cab 2.4 Diesel / Pick Up Trax Kargo 2.6 Diesel / Tempo Traveller Delivery Van LWB 2.6 Diesel / Traveller Mini Bus 2.6 Diesel / Excel-4 2.6 Diesel / Tempo Traveller Minibus 2.6 Diesel / Traveller Smart DV 3050/3350mm WB 2.6 Diesel / Tempo Traveller Microbus 2.6 Diesel / Matador 2.4 Diesel / Traveller Long Bus 2.6 Diesel / Tempo Traveller Station Wagon 2.4 Diesel / Tempo	None	F 002 H50 008	None

Commercial Vehicles and Off-highway

Vehicle Model	Bosch Battery Range		
	S3	S4/T4	S5
Traveller Ambulance LWB 2.4 Diesel / Traveller 3050 mm WB 2.6 Diesel / Tempo Traveller Microbus 2.4 Diesel / Trax 2.6D Kargo / Tempo Traveller Delivery Van 2.6 Diesel / Traveller 3350/3700 mm WB 2.6 Diesel / Traveller 4020 mm WB 2.6 Diesel / Pick Up Trax 2.6 Diesel / Excel-4 3.2 Diesel / Tempo Traveller Minibus 2.4 Diesel / Trax 2.6D Pickup Kargo / Pick Up Trax Dual Cab 2.6 Diesel / Tempo Traveller 2.4 CNG / Traveller 2.6 Diesel Force / Traveller Delivery Van LWB 2.6 Diesel / Tempo Traveller Delivery Van 2.4 Diesel / Tempo Traveller Ambulance LWB 2.6 Diesel	None	F 002 H50 008	None
Trax Toofan 2.0 CRDI	None	F 002 H50 013	None
Trump 0.6D 15 / Trump 0.6D 40 / Traveller 2.2 Diesel	F 002 H50 042	F 002 H50 006	None
<b>HINDUSTAN MOTORS LIMITED (HML)</b>			
RTV Ambulance 2.0 Diesel / RTV Custom / RTV Passenger 3.3 Diesel	None	F 002 H50 008	None
<b>MAHINDRA</b>			
Bolero Camper 2.5 / Bolero Camper 2510 2.5 D / Bolero Camper 2.5 Diesel 2880 / Bolero Camper 2.5 Diesel / Bolero Camper 2.5 Diesel 2450	None		F 002 H50 033
JEEP FC-260 2.4 Diesel 4WD / FJ 2.1 Diesel Bus / Tourister 2.5 Diesel / FJ 3.3 Diesel Bus 4WD / FJ 2.5 Diesel Chassis 4WD / FJ 2.1 Minibus CNG / FJ 2.1 Diesel Truck / FJ 3.3 Diesel Delivery Van / LoadKing Super 2.6 Diesel / Tourister DX / LoadKing CRX 2.6 Diesel / FJ 3.3 Diesel Chassis 4WD / JEEP FC-260 2.4 Diesel / Tourister 2.5 / FJ 3.3D Hi-Roof Mini-Bus 4WD / Tourister 2.6 CNG	None	F 002 H50 008	None
Maxximo 0.9D (D) 18 Kw (2010.01-->) / Bolero Camper 2750 2.5 D (D) 46 Kw (2007.04 -2010.03) / Gio 0.4D (D) 7 Kw (2009.10 -2017.03) / Imperio 2.5 (D) 56 Kw (2016.01-->) / Supro Maxitruck T2/T4/T6 / Bolero Camper 2.5 Diesel 4x4 (D) 43 Kw (2002.03 -2005.06) / Maxximo Mini VX (D) 18 Kw (2012.05-->) / Genio 2.5D (D) 56 Kw (2011.02 -2017.03) / Bolero Camper / Maxximo 0.9D MiniVan (D) 18 Kw (2011.04-->) / Gio 0.4D Compact Cab (D) 7 Kw (2011.02 -2017.03)	None	F 002 H50 064	None
CabKing 576 DI 2.5 Diesel / Cabstar 2.5 Diesel / CabKing 2.5 Diesel 576 / Cabking 2.5 Diesel DI 3150A	F 002 H50 042	F 002 H50 006	None
Maxximo 0.9D / Maxximo 0.9D MiniVan / Imperio 2.5 / Gio 0.4D / Bolero Camper 2.5 Diesel 4x4 / Bolero Camper 2750 2.5 D / Gio 0.4D Compact Cab / Genio 2.5D	F 002 H50 044		None

Commercial Vehicles and Off-highway

Vehicle Model	Bosch Battery Range		
	S3	S4/T4	S5
<b>MARUTI</b>			
Super Carry 0.8 TD	None	F 002 H50 011	None
<b>NISSAN</b>			
Evalia [M20M]	None		F 002 H50 072
<b>PIAGGIO</b>			
Apetruk (D) 8 Kw (2007.05-->) / Porter 600 (D) (2017.06-->) / Ape Mini (D) 7 Kw (2010.10-->)	None	F 002 H50 064	None
Apetruk / Ape Mini	F 002 H50 044		None
<b>SWARAJ MAZDA</b>			
Cosmo 3.5 Diesel	None	F 002 H50 008	None
<b>TATA MOTORS</b>			
Xenon Utility 3.0TD 4x2	None		F 002 H50 023
Xenon Yodha 3.0TD 4x2	None		F 002 H50 027
Winger Dicor / Xenon 2.2 CRDi Diesel / Xenon Yodha 3.0TD 4x4 / Xenon BS3 3.0 4x4 / Xenon Utility 3.0TD 4x4 / Xenon 3.0D / Xenon 2.2 CRDI 4WD / Xenon 3.0D Double Cab	None		F 002 H50 033
Cityride 407 / LP 410 3.0TD Cityride Bus / Ultra 812 BS III / LPT 407 / 206 1.9 D / SFC 407 CNG / SFC 407 TT / 407 3.0D SFC EX Turbo / SFC 407	None	F 002 H50 008	None
712 LPT EX / SK 1613 TC / SE 1612 / LPT 1109 HEX2 CR / LPT 2516 Super Turbo / Signa 4018.S BS IV / LPT 2518 / Starbus 3.0 (D) 55 Kw (2009.04 -2017.06) / LP 912 / LPT 2518 BS IV / LPT 3118 / LPK 2516 6x2 / LPK 1618 BS IV / SE 1613 / SE 1613 TC / SK 1616 / LPS 3015 TC / LPT 1109 EX (D) 92 Kw (2010.10-->) / LPT 3718 / LPT 4223 BS IV / SK 1613 Turbo BS-II / LPT 1616 BS-III / LPT 2515 6x2 / LPS 4018 / LPT 2515 60WB TC 6x2 / LPT 1618 BS-III / LPT 1613 / SK 1613 / LPT 1613 Turbo EX / SE 1613 Turbo BS-II / LPT 2516 / LPT 3118 BS IV / LPT 1618 BS IV / LPT 2515 Turbo EX 6x2 / LPK 2518 BS IV / LPK 1616 BS-III / LPT 2515 TC 6x2 / LPT 1613 EX / LPT 1613 BS IV / SK 1613 TC BS-II / LPT 1612	None	F 002 H50 009	None
1510 LP/LPO BS-II / Starbus 3.0 (D) 55 Kw (2009.04 -2017.06) / SFC 909 / LPK 2518 HD	None	F 002 H50 012	None
Prima LX 4028 S / 709 LPT E / 709 LPT HEX2 / Prima LX 2523 K / T / 410 Turbo SFC 3.0 Diesel / Prima LX 4023 S / LPT 1109 EX (D) 66 Kw (2007.05 -2010.10) / 709 SFC EX / 709 LPT EX Turbo / SE 1210 / LPK 1618 BS-III / LPT 709 BS IV / SFC 909 EX / Ultra 714 BS IV / LPT 2518/62 TC BS3 / Prima LX 3128 K / T	None	F 002 H50 013	None
Tatamobile 2.0 Diesel CrewCab (D) 50 Kw (1996.05 -2002.03)	None	F 002 H50 011	None

## Commercial Vehicles and Off-highway

Vehicle Model	Bosch Battery Range		
	S3	S4/T4	S5
Ace XL 0.7D (D) 11 Kw (2017.07-->) / Ace Zip 0.6 (D) 8 Kw (2011.04-->) / Ace (BS IV) 0.8 (D) 15 Kw (2013.04-->) / Ace (BS III) 0.7 (D) 12 Kw (2005.05 -2017.03) / ACE MAGIC 0.7 (D) 12 Kw (2007.06 -2015.08)	None	F 002 H50 015	None
Venture 1.4D (D) 51 Kw (2011.01 -2016.01) / Venture 1.4D (D) 37 Kw (2011.01 -2016.01) / Super Ace Mint (D) 52 Kw (2015.03-->) / Ace SuperAce 1.4 (D) 52 Kw (2009.12 -2012.10)	None	F 002 H50 064	None
Super Ace Mint (D) 52 Kw (2018.01-->) / Magic Iris (D) 8 Kw (2011.04-->) / 407 3.0D Cityride NA / Ace Zip XL 0.6	None	F 002 H50 065	None
Tatamobile 2.0 Diesel CrewCab	F 002 H50 041		F 002 H50 021
407 3.0 4WD	F 002 H50 042	F 002 H50 006	None
Venture 1.4D / Ace SuperAce 1.4	F 002 H50 044		None
Magic Iris	F 002 H50 045		None
Ace XL 0.7D / Ace Gold / Ace (BS III) 0.7 / ACE MAGIC 0.7 / Ace Zip 0.6 / ACE MAGIC / Ace (BS IV) 0.8 / Ace Mega XL 0.8D	F 002 H50 045		F 002 H50 025

## Two-Wheelers

Model Name	M6 TZ4L BS-3	M6 TZ2.5	M6 TZ5	M6 TZ9	M6 TZ7	M6 TZ5-L BS-3	C10 Rating (in Ah)
<b>BAJAJ AUTO</b>							
Avenger , Avenger 200 , Avenger 220 , Pulsar 200 NS , Pulsar RS200							8 Ah
V15 , Avenger Street 150						F 002 H50 063	4 Ah
Discover 150 DTS-i , Discover 150 S , Discover 150 F					F 002 H50 081		7 Ah
Pulser 180 , Pulser 220 DTS-Fi , Pulser 200 DTS-i , Eliminator , Pulser 180 DTS-i				F 002 H50 061			9 Ah
Discover 125 II , Pulsar 150 DTS-i , Platina 135 , Pulsar 150 , Discover 100 4G , XCD 135 , Wave DTS-i , Discover 125 ST , Discover 125 M , Spirit , XCD 125 , Kristal DTS-i , Pulsar AS150 , Pulsar 150 DTS-i , Saffire , Discover 125 DTS-i with ExhaustTEC , Discover 100 M , Discover 100 DTS-Si , Discover 100 T			F 002 H50 060				5 Ah
CT100 , Platina 125 , Bravo , Boxer , Platina 100 , Caliber 115 , Wind 125 , Discover DTS-i , KB125 RTZ , Discover 125 , Caliber , Champion 4S , Boxer 150 , Platina		F 002 H50 059					2.5 Ah
<b>BENELLI</b>							
TRK 502							8 Ah
<b>HERO HONDA</b>							
Pleasure , Impluse 150						F 002 H50 063	4 Ah
Karizma					F 002 H50 081		7 Ah
Street			F 002 H50 060				5 Ah
Sleek 100 , CD100SS , Super Splendor , Dawn , Passion Plus , Splendor+ , Glamour PGMFi , Ambition 135 , Passion , CBZ , CD Deluxe , CD-Dawn , Achiever , Glamour , Hunk , CD100 , Splendor		F 002 H50 059					2.5 Ah



## Two-Wheelers

Model Name	M6 TZ4L BS-3	M6 TZ2.5	M6 TZ5	M6 TZ9	M6 TZ7	M6 TZ5-L BS-3	C10 Rating (in Ah)
Passion Pro TR , Splendor iSmart , Splendor Pro Classic , Karizma ZMR	F 002 H50 062						3 Ah
<b>HERO MOTORS</b>							
Duet						F 002 H50 063	4 Ah
Passion 110 X Pro		F 002 H50 059					2.5 Ah
Maestro 110 , HF 100 Deluxe , Splendor Pro	F 002 H50 062						3 Ah
<b>HONDA</b>							
CB Unicorn 160						F 002 H50 063	4 Ah
Activa 100 , Dio			F 002 H50 060				5 Ah
Dream 110 Yuga , Unicorn , Shine 125		F 002 H50 059					2.5 Ah
Dream 110 Neo , CB 150 Dazzler , CB 125 Shine , CB 125 Shine SP , Activa 125	F 002 H50 062						3 Ah
<b>KAWASAKI</b>							
Aspire 112		F 002 H50 059					2.5 Ah
<b>KINETIC</b>							
Nova EX , Blaze , Flyte 125 , GF Laser , GF 170 , Nova 135				F 002 H50 061			9 Ah
Marvel , Zoom			F 002 H50 060				5 Ah
K4 100 , Boss 115 , 4S , Challenger , Boss 100 , Velocity		F 002 H50 059					2.5 Ah
<b>KTM</b>							
200 Duke				F 002 H50 061			9 Ah
<b>LML</b>							
Sensation				F 002 H50 061			9 Ah
Supremo			F 002 H50 060				5 Ah
Adreno FX , Freedom Prima 125 , Freedom , Freedom Prima , Star , Beamer , Energy FX		F 002 H50 059					2.5 Ah
<b>MAHINDRA</b>							
Rodeo , Duro 125 , Duro 125 RZ , Rodeo RZ , Duro 125 DZ					F 002 H50 081		7 Ah
<b>PIAGGIO</b>							
Vespa S , Vespa 125 VX , Vespa SXL , Vespa VXL			F 002 H50 060				5 Ah
<b>ROYAL ENFIELD</b>							

## Two-Wheelers

Model Name	M6 TZ4L BS-3	M6 TZ2.5	M6 TZ5	M6 TZ9	M6 TZ7	M6 TZ5-L BS-3	C10 Rating (in Ah)
Electra , Electra Twinspark 350 , Machismo 500 , Bullet 500 EFI , Bullet Electra EFI , Bullet 500 , Bullet 350 , Thunderbird 500 , Bullet Electra 500 , Thunderbird Twinspark 350 , Machismo 350 , Lightning , Thunderbird 350 , Thunderbird						F 002 H50 060	5 Ah
<b>SUZUKI</b>							
GS150R				F 002 H50 061			9 Ah
Hayate 125 DCP-FI , Hayate 113 , Access , Swish 125			F 002 H50 060				5 Ah
Zeus 125 , Heat		F 002 H50 059					2.5 Ah
Let's , Gixxer 150	F 002 H50 062						3 Ah
<b>TVS</b>							
Apache , Apache RTR 200 , Apache II , Apache RTR 180				F 002 H50 061			9 Ah
Scooty PEP+ , Scooty Streak , Scooty PEP 4S , Scooty , Scooty Zest 110 , Jupiter 110 , Jive , Flame , Spectra , Wego , Teenz			F 002 H50 060				5 Ah
StaR , StaR city+ , Shogun , StaR city , Centra , Max100 , Victor GL , Max100 R , Victor GLX , Fiero FX , Victor GX , Samurai , Shaolin , Sport , Fiero F2			F 002 H50 059				2.5 Ah
<b>YAMAHA</b>							
Ray , FZ16 , Fazer , SS 125			F 002 H50 060				5 Ah
Enticer , RXG , RX 135 , Fazer , Crux , Gladiator , Alba , YBR 110 , G5			F 002 H50 059				2.5 Ah
YZF-R15	F 002 H50 062						3 Ah



## Technical Data

Part No:	Range	Warranty (Flat + Extended*)	Segment	Nomenclature	Capacity (C5)	Capacity (C20) for 4W/ Capacity (C10) for 2W	Reserve Capacity (Min)	CCA (Amps)	Length	Width	Height (w/o poles) (in mm)	Weight	Cell Layout			
F 002 H50 076	S5+	36+54* Months	PC	50B20L	36 Ah	40 Ah	65	360	197	129	227	11	L-Layout			
F 002 H50 021	S5	36+48* Months	PC	42B20R	28 Ah	35 Ah	55	335	197	129	203	11	R-Layout			
F 002 H50 025				42B20L	28 Ah	35 Ah	55	335	197	129	203	11	L-Layout			
F 002 H50 038				40B20L (BH)	30 Ah	38 Ah	60	342	190	128	200	11	L-Layout			
F 002 H50 032				55B24L (S)	36 Ah	45 Ah	71	380	238	129	203	13	L-Layout			
F 002 H50 016				DIN 74	59 Ah	74 Ah	150	690	278	175	190	21	L-Layout			
F 002 H50 018				DIN 100	80 Ah	100 Ah	188	874	353	175	190	27	L-Layout			
F 002 H50 405				36B20R	26 Ah	33Ah	55	320	197	129	227	10	R-Layout			
F 002 H50 407				36B20L	26 Ah	33Ah	55	320	197	129	227	10	L-Layout			
F 002 H50 069				S5	30+48* Months	PC	45D20L (BH)	36 Ah	45 Ah	90	410	202	173	204	15	L-Layout
F 002 H50 072							80D23L	44 Ah	55 Ah	90	460	232	173	204	16	L-Layout
F 002 H50 023	105D31R	64 Ah	80 Ah				164	750	306	173	204	23	R-Layout			
F 002 H50 033	105D31L	64 Ah	80 Ah				164	750	306	173	204	23	L-Layout			
F 002 H50 026	DIN 44	36 Ah	44 Ah				72	350	207	175	175	13	L-Layout			
F 002 H50 070	DIN 50	40 Ah	50 Ah				80	430	207	174	190	15	L-Layout			
F 002 H50 027	DIN 55	44 Ah	55 Ah				95	540	242	175	190	18	L-Layout			
F 002 H50 028	DIN 60	48 Ah	60 Ah				110	600	242	175	190	19	L-Layout			
F 002 H50 073	90D23L (BH)	52 Ah	65 Ah				110	580	232	173	204	18	L-Layout			
F 002 H50 075	DIN 65	52 Ah	65Ah				110	590	278	175	175	18	L-Layout			
F 002 H50 046	S4+	30+48* Months	PC	38B20R	28 Ah	35Ah	55	330	197	129	203	11	R-Layout			
F 002 H50 047				38B20L	28 Ah	35Ah	55	330	197	129	203	11	L-Layout			
F 002 H50 071				38B20R (BH)	28 Ah	35 Ah	55	330	197	139	203	11	R-Layout			
F 002 H50 048	S4+	24+48* Months	PC	95D26R	52 Ah	65Ah	115	550	260	173	208	18	R-Layout			
F 002 H50 049				95D26L	52 Ah	65Ah	115	550	260	173	208	18	L-Layout			
F 002 H50 074				DIN 65	52 Ah	65 Ah	110	590	278	175	175	18	L-Layout			
F 002 H50 011	S4	24+36* Months	PC	38B20R	28 Ah	35 Ah	50	266	187	127	203	9.6	R-Layout			
F 002 H50 015				38B20L	29 Ah	36 Ah	50	266	187	127	203	10	L-Layout			
F 002 H50 064				65D26R	52 Ah	65 Ah	115	400	260	173	204	18	R-Layout			
F 002 H50 065				65D26L	52 Ah	65 Ah	115	400	260	173	204	18	L-Layout			
F 002 H50 008	T4	24+36* Months	CV	620D31R	64 Ah	80 Ah	159	620	306	173	204	23	R-Layout			
F 002 H50 013				700H29R	80 Ah	100 Ah	180	512	364	176	213	25	R-Layout			
F 002 H50 012				800D04R	96 Ah	120 Ah	228	638	505	222	213	42	R-Layout			
F 002 H50 009				00D04R	120 Ah	150 Ah	294	754	505	222	213	48	R-Layout			
F 002 H50 006				50031R	60 Ah	75 Ah	137	450	306	173	204	21	R-Layout			
F 002 H50 007				600H29R	72 Ah	90 Ah	160	600	333	176	213	26	R-Layout			
F 002 H50 078				600H29L	72 Ah	90 Ah	160	600	364	176	239	26	L-Layout			
F 002 H50 079				115F51R (N120 poly)	108 Ah	130 Ah	228	638	505	182	245	40	R-Layout			
F 002 H50 400				NT600E41L	72 Ah	90Ah	160	600	410	176	234	25	L-Layout			
F 002 H50 041				S3	12+24* Months	PC	38B20R	29 Ah	36 Ah	60	304	187	127	203	10	R-Layout
F 002 H50 045	38B20L	29 Ah	36 Ah				60	304	187	127	203	10	L-Layout			
F 002 H50 044	55D26R	48 Ah	60 Ah				105	350	260	173	204	18	R-Layout			
F 002 H50 042	800D31R	60 Ah	75 Ah				130	450	306	173	204	20	R-Layout			
F 002 H50 059	M6	24+24 Months Prorata	2W	TZ2.5	-	2.5Ah	-	-	79	69	105	1.1	-			
F 002 H50 060				TZ5	-	5Ah	-	-	116	57	130	2	-			
F 002 H50 061				TZ9	-	9 Ah	-	-	137	74	139	3.2	-			
F 002 H50 062				TZ4L BS-3	-	3Ah	-	-	110	67	85	1.5	-			
F 002 H50 063				TZ5-L BS-3	-	4Ah	-	-	110	67	105	2.1	-			
F 002 H50 081				TZ7	-	7Ah	-	-	147	56	132	2.5	-			
F 002 H50 402				TZ9R	-	8Ah	-	-	150	83	106	3.1	-			

\*Flat 30% discount on MRP (inclusive of taxes) during the extended period. Old battery to be returned.

# What drives you, drives us

Bosch technologies are used in most vehicles worldwide. People, and assuring their mobility, is what we are focused on.

Therefore, we have dedicated over 130 years of pioneering spirit and expertise in research and manufacturing to achieving this.

We provide the aftermarket and workshops worldwide with modern diagnostic and workshop equipment and a wide range of spare parts for passenger cars and commercial vehicles:

- Solutions for efficient vehicle repairs
- Innovative workshop equipment and software
- One of the world's most comprehensive ranges of new and exchange parts
- Large network of wholesale customers, for quick and reliable parts supply
- Competent hotline support
- Comprehensive educational and training offers
- Targeted sales and marketing support

Scan the below QR code to place your orders on the Bosch Infocomm App



Please contact your nearest Bosch Main Distributor to enroll in the Bosch Rewards Programme / register in the Bosch Infocomm App



**Bosch Limited**  
**Automotive Aftermarket**  
P. B. No: 3000, Hosur Road, Adegodi  
Bengaluru – 560 030

 /BoschAutoPartsIndia | [ap.boschaftermarket.com/in/en](http://ap.boschaftermarket.com/in/en) | Toll-free No: 1800 108 1081