

Drive Belts & Kits

Technical Information for Workshops

COMPLEMENTARY INSTALLATION INSTRUCTIONS

Please note the instructions below in addition to the ESI[tronic] installation manual when replacing the timing belt or the complete kit:

Applies to models of the following brands:

- ▶ Opel
- ▶ Saab
- ▶ Vauxhall

Bosch part numbers

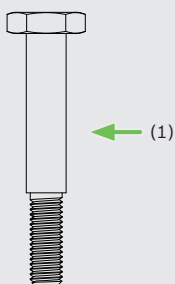
- ▶ 1 987 946 525 Timing-belt kit
- ▶ 1 987 946 911 Water-pump kit

When installing a new kit, the bolts and square nuts included are to be used unconditionally and under all circumstances. Used installation parts must not be used again.

Attention

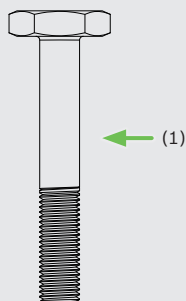
While the engine block of some vehicles is equipped with an M 8 thread for the assembly of the idler pulley (3), others feature an M 10 thread. For this reason, the kits include different versions of the bolt (1):

M 8 bolt:



M 8 x 1.25 x 63 bolt with 10 mm shaft, wrench size 17

M 10 bolt:

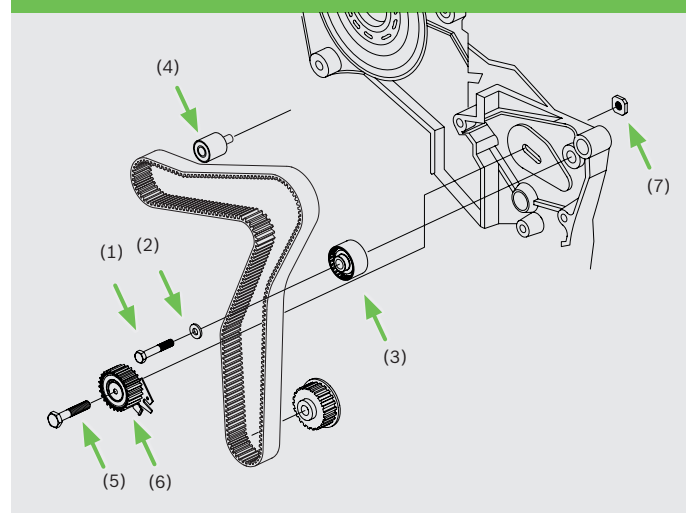


M 10 x 1.25 x 67 bolt, wrench size 22

The idler pulley (3) is to be fitted together with the washer (2) and the bolt (1). Please observe the torques specified in ESI[tronic]-M or apply 23-28 Nm to the M 8 bolt or 45-55 Nm to the M 10 bolt.

The idler pulley (4) is to be fitted together with the pre-assembled bolt. Please observe the torque specified in ESI[tronic]-M or apply 50 Nm.

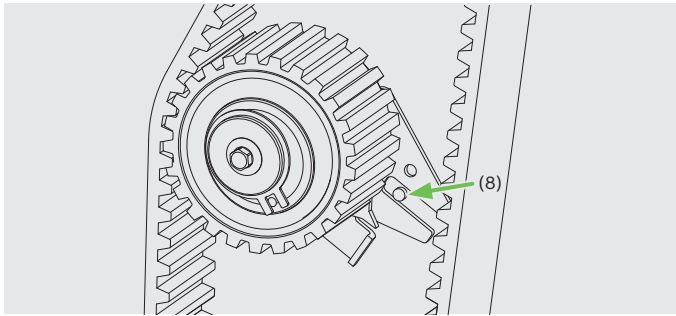
Fitting the kit



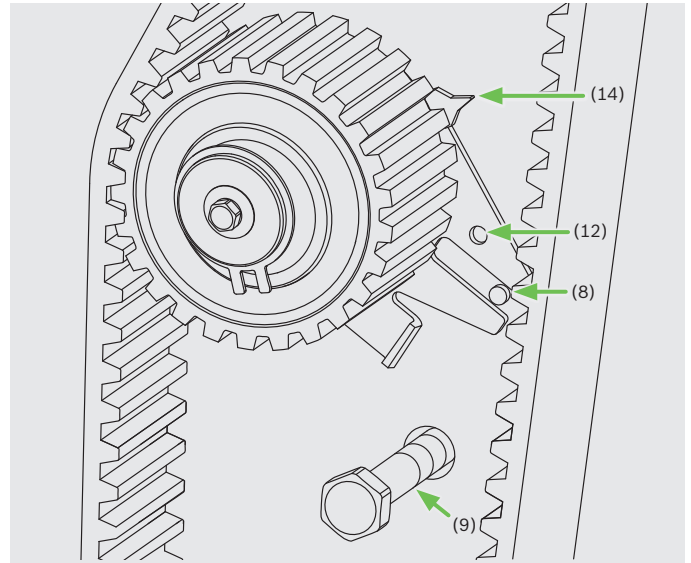
Attention

The tensioner pulley installation described here is just an excerpt from the manual on ESI[tronic]-M. Please observe the complete ESI[tronic]-M installation manual under any circumstances.

- ▶ Clean the contact surface of the tensioner pulley
- ▶ If specified by ESI[tronic]-M, please apply a thread-lock agent onto the bolt thread (5).
- ▶ Install the tensioner pulley (6) using the M 8 x 1.25 x 54 bolt (5) and the square nut (7) placed into the support from behind.

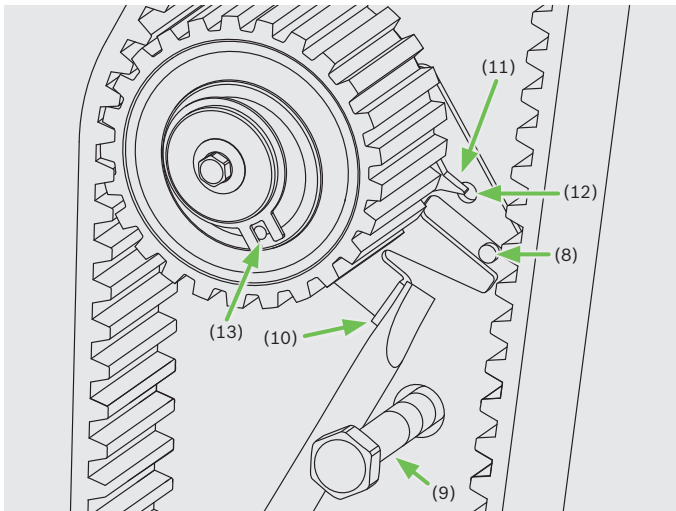


- ▶ Make absolutely sure the spike (8) is located between the bracket and the tensioner pulley.
- ▶ Fit the timing belt as specified in ESI[tronic]-M. Bolt an appropriate bolt (9) into the rear thread on the timing-belt cover. For the adjustment of the tension, this bolt is required for levering by means of a screw driver.



Second version:

- ▶ For the adjustment, lever the tensioner pulley at the point (10) until aligning the indicator (14) with the position of maximum tension (10).
- ▶ Tighten the tensioner-pulley bolt as specified in ESI[tronic]-M (depends on the model series). Proceed as specified in ESI[tronic]-M.
- ▶ After two complete revolutions of the engine, loosen the tensioner pulley and lever until aligning the indicator (11) with the drilled hole (12).
- ▶ Tighten the tensioner-pulley bolt as specified in ESI[tronic]-M.
- ▶ Remove the bolt (9) after adjusting the timing-belt tension.



Depending on the vehicle manufacturer and the model series, two different procedures are to be applied for the adjustment of the timing-belt tension.

First version:

- ▶ For the adjustment, lever the tensioner pulley at the point (10) until aligning the indicator (11) with the drilled hole (12).
- ▶ The point mark (13) on the tensioner pulley must be at the specified position.
- ▶ Tighten the tensioner-pulley bolt as specified in ESI[tronic]-M.
- ▶ After two complete revolutions of the engine, check the proper tension of the timing belt.
- ▶ Remove the bolt (9) after adjusting the timing-belt tension.