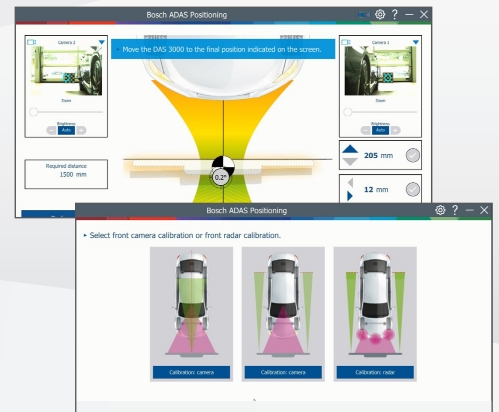




# DAS 3000

**FACELIFT**



## Evolution of DAS 3000

- ▶ New positioning software for more efficient processes and intuitive operation
- ▶ New wheel clamps for attachment in seconds and maximum accuracy
- ▶ New bumper plate for precise distance measurement to the bumper
- ▶ Printout which documents the correct alignment of the calibration device

## New positioning software:

- ▶ Revised navigation including user instructions and user friendly screen displays
- ▶ Visualization of the current position as well as the target position by graphical animations
- ▶ In addition, digital values like distance, yaw angle and lateral displacement are displayed

### Your benefits:

- ▶ Intuitive user interface for computer-aided alignment to the vehicle
- ▶ Optimised alignment process
- ▶ Simplified process when two-point front camera calibration is required
- ▶ Improved distance measurement to the front wheel thanks to the new wheel clamps



## New wheel clamps:

- ▶ Robust frame with a socket for the attachment of the reference board and a circular spirit level for a perfect centring on the wheel
- ▶ Two holding arms for fixing to the upper part of the wheel
- ▶ Cross bar with sliding cylinder adjustable for accurate mounting on all wheel and tyre combinations
- ▶ The cylinder guarantees use even on extreme softline rims
- ▶ Supports rim sizes from 14" – 24"

### Your benefits:

- ▶ Attachment in seconds with maximum accuracy
- ▶ Wheels and rims are protected
- ▶ Suitable for different rim sizes and immediately ready to hand
- ▶ Storage and transport on the DAS 3000 trolley with attached reference board

## New bumper plate:

- ▶ Bumper plate for measuring the distance to the bumper is mounted on the front part of the calibration frame and offers a total height of 800 mm
- ▶ Bumper plate is covered with soft rubber elements to be positioned directly on the bumper or at the front of the vehicle
- ▶ Bumper plate is stored on the side of the DAS 3000 trolley

### Your benefits:

- ▶ Precise and fast distance measurement according to OEM specifications
- ▶ Designed for alignment processes on leveled ground but also practical on surface-mounted lifts
- ▶ Increased efficiency in front camera calibration of Kia/Hyundai, Toyota, Mazda, Mercedes-Benz and Opel
- ▶ Also perfectly applicable for front radar calibration of VAG, BMW and Nissan

