

Truck World

A Bosch Automotive Aftermarket magazine | edition 31 | October 2021

Bosch Secure Truck Parking

Bosch creates safe truck parking areas – projects can now be funded by the BMVI

Tips & tricks

for the replacement of steering systems

Page 4

Denoxtronic

Complete range for exhaust-gas treatment

Page 5

Digitalization

“Added value by quality” via workshop survey

Page 7

EDITORIAL

THERE IS NOTHING CONSTANT EXCEPT CHANGE**Dear truck fans,**

The creation of additional truck parking areas is now sponsored, there is a complete range for the replacement and repair of Denoxtronic exhaust-gas treatment system, relying on high quality makes sense in terms of cabin filters, steering systems should be replaced as specified and workshop digitalization is progressing even faster. You will find more on these topics within this issue of the Truck World magazine. It informs about current developments and changes of commercial-vehicle workshops – for good, as we believe.

On behalf of the commercial vehicle team, I wish you an enjoyable read and great journey into the connected workshop future!

Best wishes, Tobias Weiss

A look ahead: 2022 Dakar Rally

For the third time in Saudi Arabia:
Dakar rally from January 2 to 14, 2022



Safe parking

Booking truck parking via Bosch app

MORE TRUCK PARKINGS THANKS TO BMVI FUNDING GUIDELINE

Drivers know, it's the same issue every day. In the early evening hours, truck stops are jammed with vehicles standing on the driveways – on both entry and exit – since there is just not enough parking space on site. Usually, truck drivers waste a lot of time searching for an empty spot. And unsecured parking also increases the risks of accidents and cargo theft. There is a simple reason for this situation: According to the German Federal Highway Research Institute BAST there is a lack of some 23,000 truck parking bays on German roads. A new funding guideline of the Federal Ministry of Traffic and Digital Infrastructure (BMVI) is meant to help on: BMVI now first supports the creation of truck parking areas making available depot areas and spaces in industrial parks.

BOSCH SECURE TRUCK PARKING STARTED BACK IN 2017

The digital booking platform Bosch Secure Truck Parking has shown, such a conversion concept does make sense. Since 2017, it has been successfully using this principle. By now, it comprises a network of more than 60 areas across Europe.

"We are pleased to advise all parties involved providing information about where and how fundable projects can be realized. On the other side, we help truck stops, hauler companies and others realizing these projects," Dr. Jan-Philipp Weers, head of Bosch Secure Truck Parking, explained.

UP TO 90 PERCENT OF THE COSTS CAN BE FUNDED

Thanks to the new BMVI funding, creation and expansion of parking areas can be funded by up to 70



Bosch Secure Truck Parking: Finding, booking and paying a parking space easily via app

percent whereas the conversion of areas can be funded by up to 90 percent of the costs. At a first step until 2024, 90 million Euros are available to create additional parking areas for a period of at least ten years. For companies converting areas available, support can be provided by funding fences, marking, IT systems, lighting and safe route guidance. The parking areas must not be further away from the Autobahn access than three kilometers. They must also comprise at least 30 parking bays and must be accessible throughout the year after 6 o'clock in the afternoon. Besides sanitation facilities, they shall also feature a system collecting information on the current occupancy rate and providing this data online to the mobility data marketplace (MDM).

BOSCH POOLS COMPETENCIES

The Bosch Secure Truck Parking network includes several areas similar to the areas described at the funding criteria. For this purpose, Bosch Service Solutions, the business division managing the platform, cooperates with truck stops, haulers and companies with logistic areas. Bosch consults companies about

details regarding technical equipment and renting of truck parking bays. This includes the development of safety and security concepts, the integration of solutions for access restrictions as well as the digital integration into the booking platform. The parking bay can be booked either centrally or online via app and without delay by the drivers themselves. Details on the parking areas such as equipment and fare on site can also be accessed digitally.

[bosch-secure-truck-parking.com](https://www.bosch-secure-truck-parking.com)

BOSCH SECURE TRUCK PARKING

Bosch Secure Truck Parking offers technological safety, security and service solutions for the logistics sector. Its core is its booking platform for truck parking bays allowing haulers and truck drivers to book and pay parking bays. Across Europe, Bosch creates safe, secure and digital parking solutions thus supporting truck stop operators consulting them from the development of the concept to the realization of ready-to-use security solutions – including access control, video surveillance and online payment solutions.

2021 ETM AWARDS

READERS VOTED BEST BRANDS CONCERNING CV SERVICING



Andreas Weger (in the middle), Sales and Marketing for commercial vehicles at Bosch Automotive Aftermarket, received the awards for the following categories: batteries, battery chargers, A/C service units and cross-brand OBD diagnostics.

BOSCH RANKS FOUR TIMES 1ST AT THE WERKSTATT AKTUELL BEST BRANDS 2021



Bosch batteries, battery chargers and cross-brand OBD diagnostic

devices prevailed at their respective categories at the eighth WERKSTATT aktuell readers' poll.

Several hundred workshop and service professionals voted their "Best Brands" of the year



regarding 15 different categories out of 93 brands of relevance for the



German market. This survey is considered an important benchmark indicator of the

sector. The common methodology and modern evaluation methods ensure a high level of quality. Bosch thanks the participants for the huge trust they placed in the Bosch brand.



Tips & tricks: proper replacement of Bosch steering systems



Commercial-vehicle steering systems, pumps, attachment parts and accessories

Steering systems are particularly safety-relevant vehicle components. They are mostly maintenance-free and designed to last for the complete vehicle lifecycle. While accessory parts can get damaged or worn over time and should then be replaced, the steering system itself usually doesn't need to be replaced unless damaged in case of accidents or by mechanical overloads affecting the steering function.



Truck steering system

FIRST STEP: VISUAL AND FUNCTIONAL INSPECTION

When working on steering systems, comprehensive visual and functional inspections are always the first step. For this purpose, operating forces, resetting, clearances, noises and the warning lamp are checked. Workshops using ESI[tronic] 2.0 Truck software will find comprehensive service and installation instructions included within the SIS module. They provide information concerning troubleshooting on mechanical and, if applicable, also on electrical systems. Afterwards, an additional in-depth diagnosis is performed to determine whether a steering system needs to be replaced or if it can be repaired.

OBSERVING THE RIGHT STEPS DURING THE REPLACEMENT

Install the steering system exactly as described and observe the installation instructions. As a matter of principle, use attachment parts such

as Pitman arms, steering shafts and pressure limiting valves only if they have been approved by the manufacturer. Install all attachment parts properly as to prevent consequential damages such as corrosion. When maintaining hydraulic steering systems, flush the system and, if required, replace the fine-mesh filter as well.

Once the steering system has been replaced, make sure to fill and bleed it properly. Only use hydraulic oils approved by the manufacturer. Make sure the warning lamp is off and the fault memory cleared after the installation. Last but not least, perform a test ride on non-public grounds to check the steering system's proper functioning.



CV steering system with rear-axle steering

ADDITIONAL INFORMATION



Service documents and installation instructions



Technical support

Denoxtronic: comprehensive Bosch range for CVs



Replacing a Bosch supply module on a truck

In 2004, Bosch first offered Denoxtronic solutions for commercial vehicles. Ever since, five generations of Denoxtronic exhaust-gas treatment and dosing systems have been installed on most diesel vehicles. This system injects a watery urea solution (known as AdBlue) into the exhaust stream. In combination with the SCR catalytic converter, this turns

harmful nitrogen oxides (NO_x) into water and nitrogen.

Today, approximately 12 million of these systems are used in trucks, construction and agricultural machinery as well as stationary units with diesel generators worldwide. That's a huge potential for commercial-vehicle workshops to generate additional turnover. After all, professionally used commercial vehicles need to be serviced regularly in order to achieve a long service life and high mileages. This results in a high demand for servicing at the workshops.

THE COMPLETE BOSCH DENOXTRONIC RANGE

Bosch supplies a comprehensive range for Denoxtronic maintenance and repair at commercial-vehicle workshops

- ▶ Diagnostic equipment
- ▶ ESI[tronic] workshop software
- ▶ Supply and dosing modules
- ▶ Bosch eXchange range of replacement parts
- ▶ Spare parts and tools for field repair of individual components
- ▶ Denoxtronic filters
- ▶ Exhaust-gas sensors
- ▶ Technical trainings



Modern Denoxtronic 2.2 supply module

BOSCH DENOXTRONIC SERVICE RANGE

Bosch offers a comprehensive range of services to meet the demands of this highly complex market. Denoxtronic test kits and KTS Truck diagnostic devices can be used to test the components of Denoxtronic exhaust-gas treatment systems without having to remove them and right on the commercial vehicle. Reliable identification of defective modules allows for quick and suitable service solutions.



Professional field repair

This can, for instance, be the replacement of defective modules – from the range of the new parts program or the Bosch eXchange replacement parts program. Another solution might be Denoxtronic field repair. For this purpose, the Bosch range includes a variety of components and repair instructions as well as logical and easily performed tests. Featuring many years of Original equipment experience and competence, Bosch is able to provide test equipment, software, modules, sensors and filters for efficient and time-saving servicing – from a single source and for any workshop. **Bosch sales representatives provide information on Denoxtronic service solutions.**

Bosch cabin filters in comparison: quality pays off



Bosch cabin filters for commercial vehicles

USE BOSCH FILTERS, BE SAFE

Commercial drivers often pass their working hours behind the steering wheel – including their breaks and even the nights. For their health, clean cabin air is thus indispensable. Bosch activated-carbon filters ensure as clean air as possible as they protect against pollen, fine dusts as well as foul-smelling and harmful gases. This increases the drivers' power of concentration on the roads. But this filtration also increases the vision inside the vehicle as it reduces the deposits on the windows and windshield.

Bosch cabin filters are specifically geared to the high demands commercial vehicles place on them. They meet two or three times the vibration resistance, dust retention capacity and service life of passenger-car cabin filters.

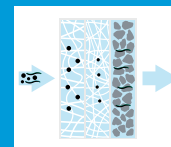
This is also reflected by their replacement intervals: Depending on the vehicle manufacturers' specifications, Bosch recommends replacing them every 200,000 to 300,000 km.

BEWARE OF LOW-QUALITY CABIN FILTERS!

For professional applications, high quality is of particular importance. Bosch cabin filters clean the air by means of several well-matched layers. High-quality fibers and a large filter surface ensure high reliability and stability. Harmful gases and smells are absorbed by high-quality activated carbon. The shape and size perfectly geared to the respective application prevents unfiltered air from bypassing the filter. Therefore, relying on Bosch quality pays off for professionals.

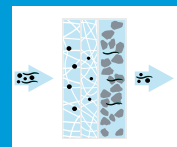
IN COMPARISON: BOSCH FILTERS AND LOW-QUALITY FILTERS

Bosch filters

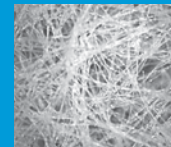


Pure air through several well-coordinated filter layers

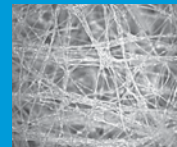
Low-quality filters



Poorly coordinated and too thin filter layers



Reliable filtration thanks to high-quality fibers



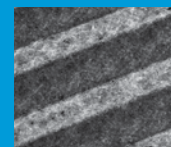
Low-quality fibers, insufficient fibers



Stability and increased filter surface through special embossing of the filter medium

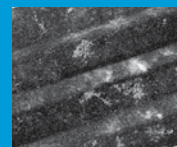


Low-quality filter medium without embossing



Reliable absorption of harmful gases and odors through

- ▶ high-quality activated carbon
- ▶ enough activated carbon
- ▶ firm connection with the carrier fleece



Usage of

- ▶ low-quality activated carbon
- ▶ insufficient activated carbon
- ▶ uneven distribution



Stable pleat geometry – even when exposed to humidity



Unstable pleat geometry

Digitalization of commercial-vehicle workshops



Bosch supports CV workshops' digital diagnoses, spare-parts selection and ordering

For years, commercial-vehicle workshops have been dealing with digitalization. This includes troubleshooting, workshop concepts and communication with customers. "Qualität ist Mehrwert" (German for: added value by high quality) is an initiative launched by AAMPACT e.V., a network of leading parts manufacturers. In 2021, this initiative conducted a survey at 814 companies of which 84 % are independent workshops.

DIGITALIZATION HAS ARRIVED AT THE WORKSHOPS

The outcome of this survey has shown, the respondents recognized the huge advantages of digitalization. These include faster processing, eased work, improved customer loyalty and customer acquisition support. According to their own feedback, 85 % of today's workshops are well-equipped in terms of diagnostic devices and feature a good internet connection. Even digital spare parts ordering has become normal. Whereas back in

2016, 18 % of the workshops did not order online, today, only 2 % still abstain from doing so. Clear differences with car workshops became apparent, too. At those workshops, digitalization is almost always "a matter for the boss", 59 % of the commercial-vehicle workshops delegate this responsibility to their staff. Throughout the next two years, 79 % of them plan on investing into the workshops, staff training, customer communication and accountancy.

IN FUTURE, MORE SUPPORT WILL BE NEEDED

Workshops are receptive to digitalization and the potentials it bears, but there is also a huge demand for support. By means of diagnostic solutions, services and trainings, Bosch already offers them comprehensive support concerning digitalization. Bosch firmly plans on further expanding this support in future.

Workshop survey:



NEW BOSCH TWIN

IMPROVED WIPER-BLADE DESIGN FOR BUSES



Bosch Twin with robust end caps

Bus wiper blades are subject to heavy strains. In order to ensure their increased stability, Twin wiper blades for commercial vehicles have now been complemented by robust end caps. The advantages of the well-known Twin wiper-blade design remain. These include consistently clean and clear vision as well as the long service life thanks to wear-resistant micro twin-edge wiper rubbers with smooth-glide coating. The modern bracket system with triple corrosion protection has proven its worth at comprehensive vehicle-specific quality and functional tests. Bosch offers Twin wiper blades for buses featuring lengths between 800 and 1 000 mm. The adapters included in the scope of delivery allow for a high vehicle coverage with less individual types. This significantly reduces the need for stock keeping at the retailers.

Victory in Misano: Hahn 4th at the 2021 ETRC

BOSCH INSIDE 2021 HAHN TRUCK

- ▶ Batteries
- ▶ Crankshaft sensor
- ▶ Camshaft sensor
- ▶ Diesel injection system with EDC7U control unit and unit injectors
- ▶ Fuel-filter replacement box
- ▶ Fuses
- ▶ Heavy-duty alternator
- ▶ Intake-manifold pressure sensor
- ▶ Oil filter
- ▶ Relays
- ▶ Ribbed V-belts
- ▶ Wiper blades



Photo: Team Hahn Racing

Misano World Circuit – a home run for Jochen Hahn's Italian Iveco S-Way race truck

Two podium finishes and a victory

At the final round of this year's FIA European Truck Racing Championship on Misano World Circuit, Jochen Hahn announced his will to fight for the top ranks at an early stage of the event by achieving top-3 lap times at the first free practice. The optimizations carried out on his Iveco S-Way paid off: He accomplished a victory and two podium finishes pushing him onto fourth position on the overall standings – right behind Norbert Kiss, Sascha Lenz (both on MAN) and Adam Lacko (Freightliner). Together with his teammate Steffi Halm, they also won the vice championship at the team classification as team "bulls from Iveco".

LUKAS HAHN ALSO SUCCESSFUL

At the Iveco home run in Misano, Team Hahn Racing took part with two trucks. The second S-Way race truck was piloted by Lukas Hahn. The rookie achieved brilliant results finishing fourth at the third race and winning twice at the Goodyear Cup. Correspondingly happy, Jochen Hahn stated: "We will work hard throughout the winter and attack again next year. My highlight of the weekend was Lukas' sensational performance. I'm incredibly proud of him."

www.team-hahn-racing.de



Photo: Team Hahn Racing

Hahn uses Bosch tools

Jochen Hahn is Europe's most successful truck-racing pilot and an expert for anything related to trucks. On his direct way to the victory, Bosch tools are an ideal solution for him to carry out technical improvements on the vehicles and to ease his work. What is it, what drives him most? Have a look: [▶ Video portrait: Bosch Power Tools \(German only\)](#)

IMPRINT

Published by:
Robert Bosch GmbH
Automotive Aftermarket
AA/MBC2

Editor:
Benedikt Elser

Errors and omissions
excepted

www.bosch.com



BOSCH
Invented for life