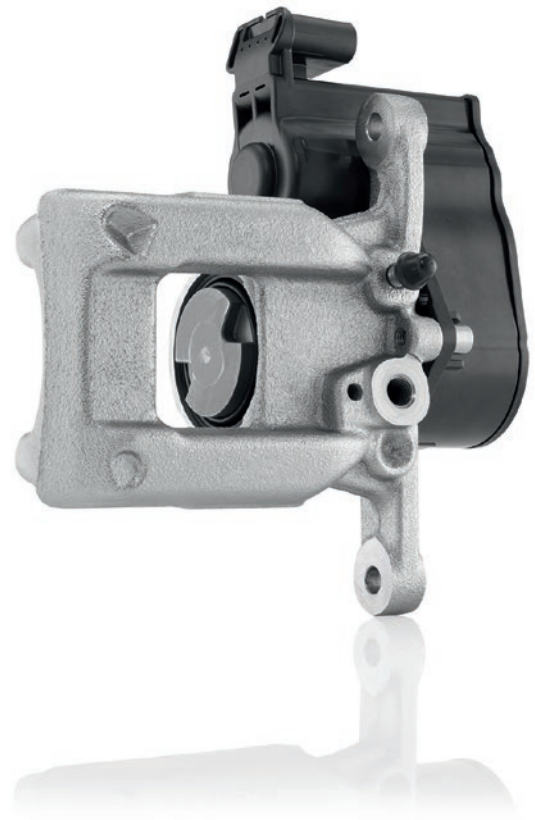


Bosch Brake Calipers APB (Automated Parking Brake) Technical Information for Workshops

Bosch brake calipers convert the hydraulic pressure reliably ensuring an excellent braking effect. They are available for a wide range of vehicles - specially matched to the requirements of the respective vehicle type. Their strengths: high reliability and long service life.

Advantages at a glance

- ▶ High-quality materials for a long service life
- ▶ Safety and reliability due to same functional and quality tests as original equipment parts
- ▶ Wide range of products to cater for most vehicle types
- ▶ Comfortable parking brake handling



Info for wholesalers and workshops

Please check with the tester for any the error codes of the APB in the memory before starting and after any maintenance work.

Trouble shooting parking brake indicator lamp or system not operating. Check with diagnostic system and the cable connection.

If this step is not working disconnect battery and restart procedure again.



Only to be installed by specialist personnel



Use an approved /suitable diagnostic tester



Battery fully charged at least 12V throughout the procedure



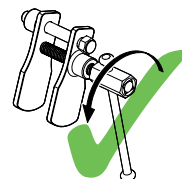
Do no press the parking brake button. Ignition on, engine not running



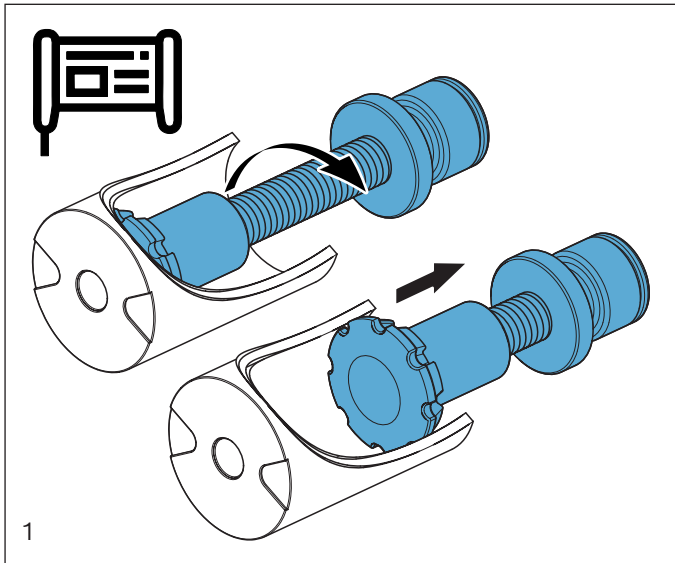
The brake pedal remains unpressed



Follow instruction from vehicle manufacturer

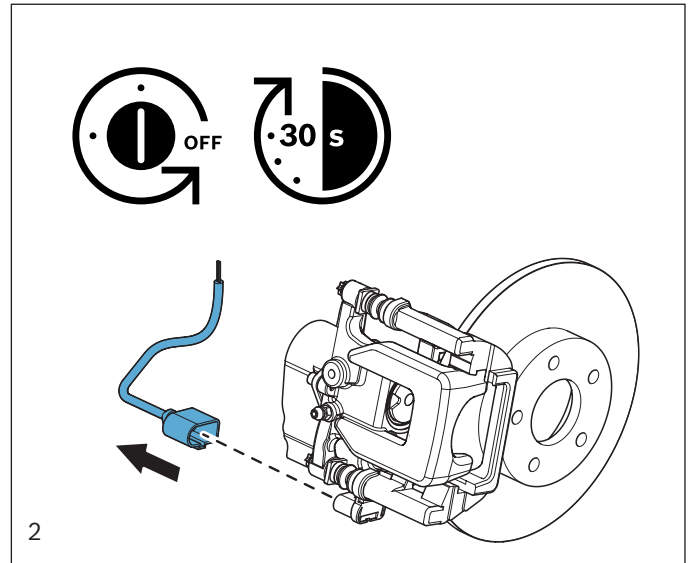


Only use the recommended tools. All pistons have to be pushed and not rotated

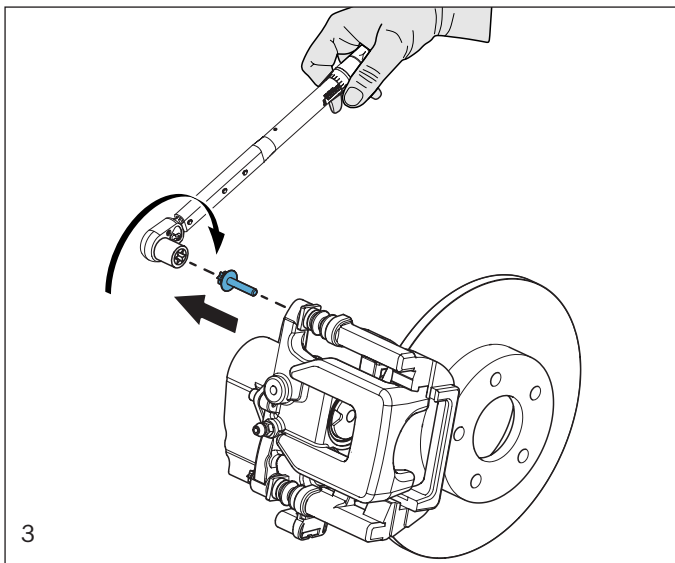


Set maintenance mode with appropriate diagnostic tester

- ▶ The pin inside the brake piston retracts, which is accompanied by loud operation of electric motors on the brake calipers. This takes several seconds.

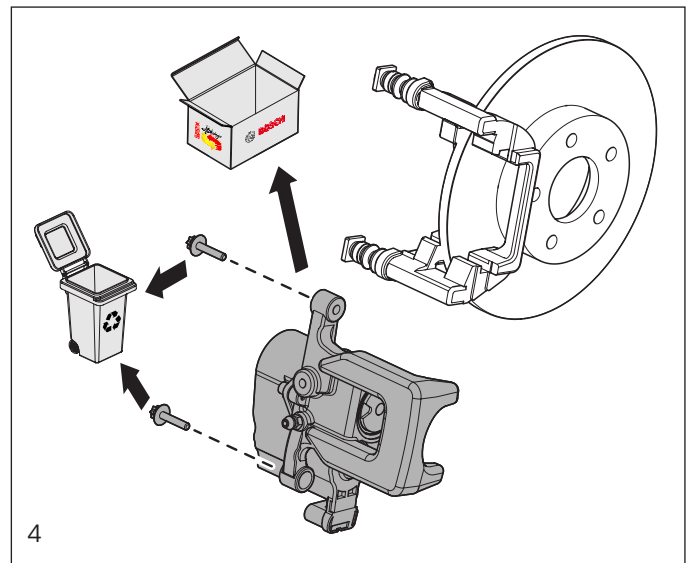


- ▶ Turn off the ignition and keep turned off **during the entire** repair!
- ▶ Wait **at least 30 s**
- ▶ Unplug the connector at the APB module



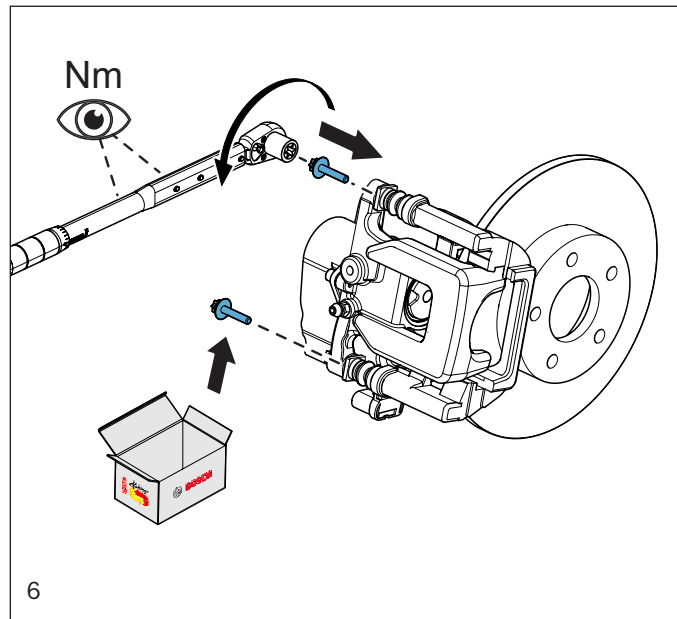
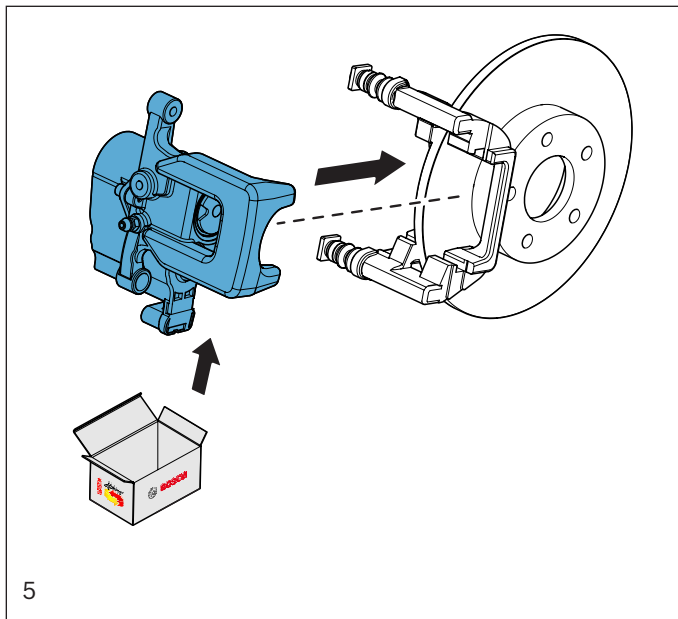
Caution:
Ignition remains off!

- ▶ Dismantle the APB brake caliper
- ▶ Respect the vehicle manufacturer recommendation



Caution:
Ignition remains off!

- ▶ Dispose of old brake caliper to Bosch with "Back-in-box" method

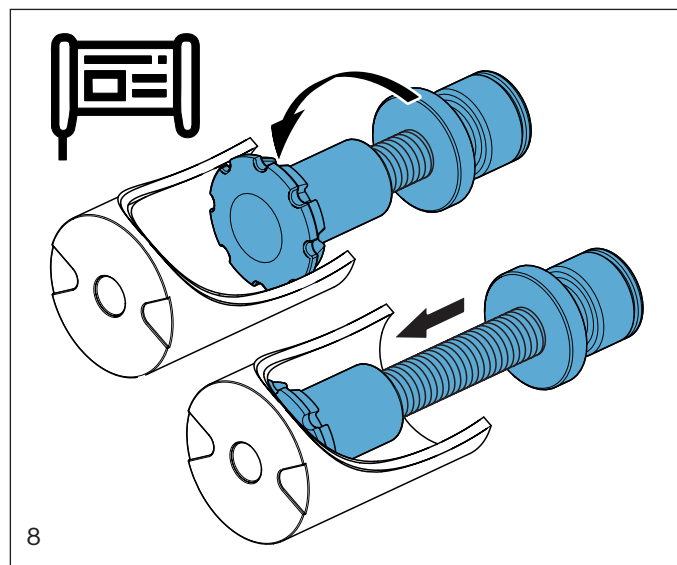
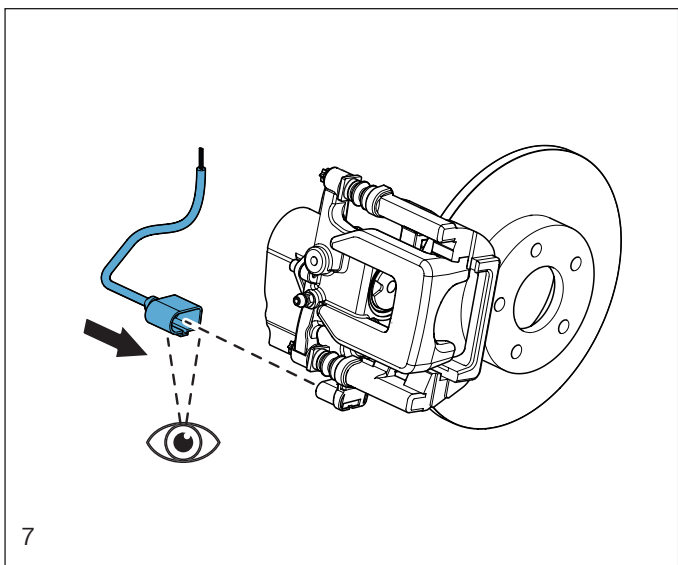


Caution:

Ignition remains off!

- ▶ Assemble the new APB brake caliper
- ▶ Respect the vehicle manufacturer recommendation

- ▶ Respect specified torque



Caution:

Ignition remains off!

Before replugging the pad wear sensor and the APB cable recheck

- ▶ for defective wires
- ▶ all sliding parts are greased and slide freely

- ▶ Turn on the ignition
- ▶ Calibrate the APB with the diagnostic tester
- ▶ Revert tester to normal mode

Caution:

- ▶ Perform a brake test to ensure that the brakes work correctly