

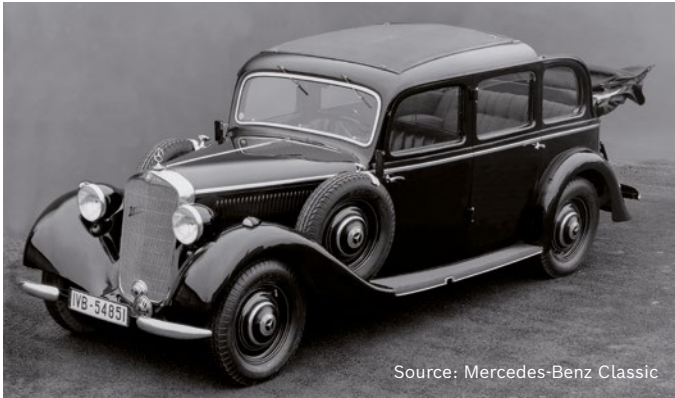
The production started in Stuttgart in 1930

90 years ago, when Bosch first launched fuel filters onto the market, they mainly solved one major issue: They protected diesel – and later on also gasoline – injection components against contaminants and impurities.



Although even the first Bosch fuel filters were already highly elaborate, they had to be cleaned quite often.

The breakthrough was achieved in 1936: For the first time ever, Bosch used a special paper as filter medium. It formed the basis for a material which is still most commonly used down to the present day – although, of course, further developed – due to its high cleaning efficiency.



Source: Mercedes-Benz Classic

Robert Bosch GmbH
Automotive Aftermarket
Auf der Breit 4
76227 Karlsruhe
Germany
boschaftermarket.com



See a fuel filter
doing its job
▶ **Video**



BOSCH
Invented for life

Heroes under the hood Bosch fuel filters

90 Years

Fuel filters from Bosch
1930-2020



90 years of Bosch fuel filters: to be continued!

Since 1930, Bosch fuel filters have been protecting the injection systems of motor vehicles. They reliably separate particles and water from fuel and contribute to optimum engine performance.



1936

The first filter made of a special paper – a material still used and further developed down to the present day

2001

Bosch gasoline filters for in-tank units

2020

Bosch filters – for today's and future mobility

1930

First Bosch fuel filters

1998

Bosch common-rail diesel filter with integrated water separator

2009

Bosch common-rail diesel filter for biodiesel applications



For tomorrow's mobility: filters will continue being important!

In future, Bosch will continue providing accurately fitting and matching filters – no matter which fuels or drive systems will then prevail on the markets. Whether electric drive, fuel cell or hybrid drive, all of these powertrain systems need clean water, oil or air for battery and/or engine cooling. And cabin filters will also continue to ensure clean air inside the cabin!